

Summary

Production Name	ZnT-1 Rabbit Polyclonal Antibody
Description	Rabbit Polyclonal Antibody
Host	Rabbit
Application	WB
Reactivity	Human,Rat,Mouse

Performance

Conjugation	Unconjugated
Modification	Unmodified
Isotype	IgG
Clonality	Polyclonal
Form	Liquid
Storage	Store at 4°C short term. Aliquot and store at -20°C long term. Avoid freeze/thaw cycles.
Buffer	Liquid in PBS containing 50% glycerol, 0.5% BSA and 0.02% New type preservative N.
Purification	Affinity purification

Immunogen

Gene Name	SLC30A1
Alternative Names	SLC30A1; ZNT1; Zinc transporter 1; ZnT-1; Solute carrier family 30 member 1
Gene ID	7779.0
SwissProt ID	Q9Y6M5.The antiserum was produced against synthesized peptide derived from human SLC30A1. AA range:201-250

Application

Dilution Ratio	WB 1:500-1:2000. ELISA: 1:5000.
Molecular Weight	55kD

Background

function:May be involved in zinc transport out of the cell.,similarity:Belongs to the cation diffusion facilitator (CDF)

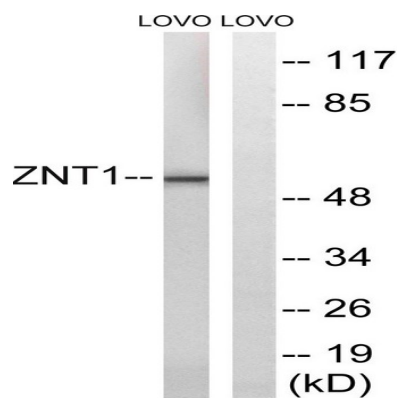
Product Name: ZnT-1 Rabbit Polyclonal Antibody
Catalog #: APRab20295



transporter (TC 2.A.4) family. SLC30A subfamily.,subunit:Multimer.,function:May be involved in zinc transport out of the cell.,similarity:Belongs to the cation diffusion facilitator (CDF) transporter (TC 2.A.4) family. SLC30A subfamily.,subunit:Multimer.,

Research Area

Image Data



Western blot analysis of lysates from LOVO cells, using SLC30A1 Antibody. The lane on the right is blocked with the synthesized peptide.

Note

For research use only.