
Summary

Production Name	ZNF75 Rabbit Polyclonal Antibody
Description	Rabbit Polyclonal Antibody
Host	Rabbit
Application	WB,IHC,ELISA
Reactivity	Human,Rat,Mouse

Performance

Conjugation	Unconjugated
Modification	Unmodified
Isotype	IgG
Clonality	Polyclonal
Form	Liquid
Storage	Store at 4°C short term. Aliquot and store at -20°C long term. Avoid freeze/thaw cycles.
Buffer	Liquid in PBS containing 50% glycerol, 0.5% BSA and 0.02% New type preservative N.
Purification	Affinity purification

Immunogen

Gene Name	ZNF75D
Alternative Names	ZNF75D; ZNF75; ZNF82; Zinc finger protein 75D; Zinc finger protein 75; Zinc finger protein 82
Gene ID	7626.0
SwissProt ID	P51815.The antiserum was produced against synthesized peptide derived from human ZNF75. AA range:296-345

Application

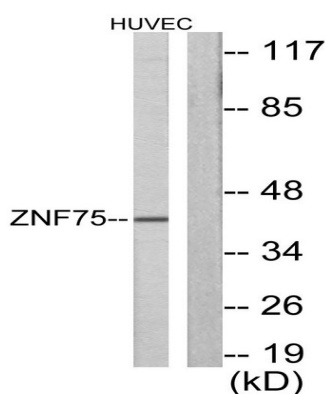
Dilution Ratio	WB 1:500 - 1:2000. IHC 1:100 - 1:300. ELISA: 1:10000..
Molecular Weight	40kD

Background

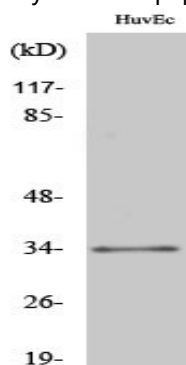
zinc finger protein 75D(ZNF75D) Homo sapiens This gene encodes a protein that likely functions as a transcription factor. The protein, which belongs to the ZNF75 family, includes an N-terminal SCAN domain, a KRAB box, and five C2H2-type zinc finger motifs. Another functional gene belonging to this family is located on chromosome 16, while pseudogenes have been identified on chromosomes 11 and 12. Alternative splicing results in multiple transcripts variants. [provided by RefSeq, Jun 2010],function:May be involved in transcriptional regulation.,similarity:Belongs to the krueppel C2H2-type zinc-finger protein family.,similarity:Contains 1 KRAB domain.,similarity:Contains 1 SCAN box domain.,similarity:Contains 5 C2H2-type zinc fingers.,

Research Area

Image Data

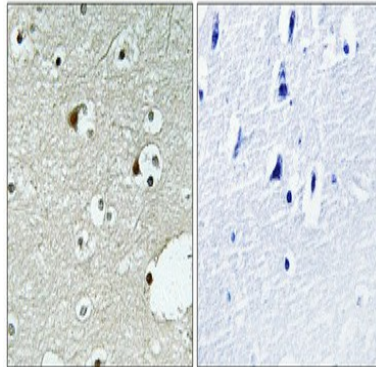


Western blot analysis of lysates from HUVEC cells, using ZNF75 Antibody. The lane on the right is blocked with the synthesized peptide.



Western Blot analysis of various cells using ZNF75 Polyclonal Antibody diluted at 1: 500. Secondary antibody was diluted at 1:20000

Product Name: ZNF75 Rabbit Polyclonal Antibody
Catalog #: APRab20284



Immunohistochemical analysis of paraffin-embedded Human brain. Antibody was diluted at 1:100 (4°,overnight) . High-pressure and temperature Tris-EDTA,pH8.0 was used for antigen retrieval. Negative contrl (right) obtaned from antibody was pre-absorbed by immunogen peptide.

Note

For research use only.