

Summary

Production Name	ZNF668 Rabbit Polyclonal Antibody
Description	Rabbit Polyclonal Antibody
Host	Rabbit
Application	WB
Reactivity	Human,Mouse

Performance

Conjugation	Unconjugated
Modification	Unmodified
Isotype	IgG
Clonality	Polyclonal
Form	Liquid
Storage	Store at 4°C short term. Aliquot and store at -20°C long term. Avoid freeze/thaw cycles.
Buffer	Liquid in PBS containing 50% glycerol, 0.5% BSA and 0.02% New type preservative N.
Purification	Affinity purification

Immunogen

Gene Name	ZNF668
Alternative Names	ZNF668; Zinc finger protein 668
Gene ID	79759.0
SwissProt ID	Q96K58.The antiserum was produced against synthesized peptide derived from human ZNF668. AA range:271-320

Application

Dilution Ratio	WB 1:500-1:2000. ELISA: 1:10000.
Molecular Weight	68kD

Background

function:May be involved in transcriptional regulation.,similarity:Belongs to the krueppel C2H2-type zinc-finger protein

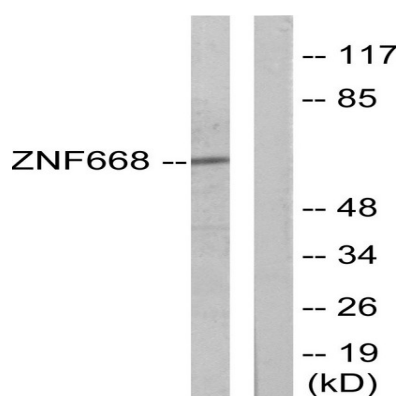
Product Name: ZNF668 Rabbit Polyclonal Antibody
Catalog #: APRab20277



family, similarity: Contains 16 C2H2-type zinc fingers, function: May be involved in transcriptional regulation, similarity: Belongs to the krueppel C2H2-type zinc-finger protein family, similarity: Contains 16 C2H2-type zinc fingers,

Research Area

Image Data



Western blot analysis of lysates from Jurkat cells, using ZNF668 Antibody. The lane on the right is blocked with the synthesized peptide.

Note

For research use only.