

---

## Summary

|                        |                                   |
|------------------------|-----------------------------------|
| <b>Production Name</b> | ZNF592 Rabbit Polyclonal Antibody |
| <b>Description</b>     | Rabbit Polyclonal Antibody        |
| <b>Host</b>            | Rabbit                            |
| <b>Application</b>     | WB,IHC,ELISA                      |
| <b>Reactivity</b>      | Human,Mouse                       |

## Performance

|                     |  |
|---------------------|--|
| <b>Conjugation</b>  | Unconjugated   |
| <b>Modification</b> | Unmodified   |
| <b>Isotype</b>      | IgG  |
| <b>Clonality</b>    | Polyclonal   |
| <b>Form</b>         | Liquid   |
| <b>Storage</b>      | Store at 4°C short term. Aliquot and store at -20°C long term. Avoid freeze/thaw cycles. |
| <b>Buffer</b>       | Liquid in PBS containing 50% glycerol, 0.5% BSA and 0.02% New type preservative N.       |
| <b>Purification</b> | Affinity purification  |

## Immunogen

|                          |  |
|--------------------------|--|
| <b>Gene Name</b>         | ZNF592   |
| <b>Alternative Names</b> | ZNF592; KIAA0211; Zinc finger protein 592  |
| <b>Gene ID</b>           | 9640.0   |
| <b>SwissProt ID</b>      | Q92610.The antiserum was produced against synthesized peptide derived from human ZNF592. AA range:961-1010 |

## Application

|                         |  |
|-------------------------|--|
| <b>Dilution Ratio</b>   | WB 1:500 - 1:2000. IHC 1:100 - 1:300. ELISA: 1:40000.. |
| <b>Molecular Weight</b> | 160kD  |

## Background

---

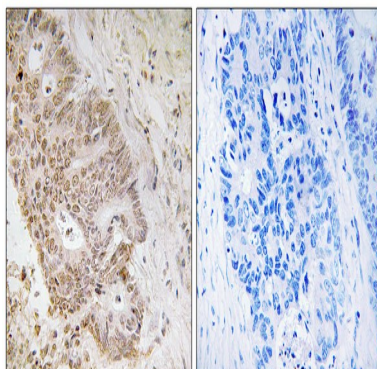
**Product Name: ZNF592 Rabbit Polyclonal Antibody**  
**Catalog #: APRab20273**



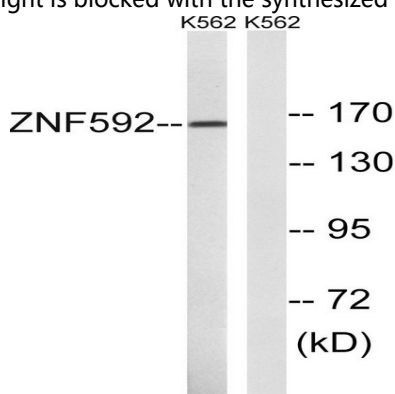
zinc finger protein 592(ZNF592) Homo sapiens This gene is thought to play a role in a complex developmental pathway and the regulation of genes involved in cerebellar development. Mutations in this gene have been associated with autosomal recessive spinocerebellar ataxia. [provided by RefSeq, Jan 2011],function:May be involved in transcriptional regulation.,PTM:Phosphorylated upon DNA damage, probably by ATM or ATR.,similarity:Belongs to the krueppel C2H2-type zinc-finger protein family.,similarity:Contains 13 C2H2-type zinc fingers.,

## Research Area

## Image Data



Immunohistochemistry analysis of paraffin-embedded human colon carcinoma tissue, using ZNF592 Antibody. The picture on the right is blocked with the synthesized peptide.



Western blot analysis of lysates from K562 cells, using ZNF592 Antibody. The lane on the right is blocked with the synthesized peptide.

## Note

For research use only.