

## Summary

<b>Production Name</b>	ZNF541 Rabbit Polyclonal Antibody
<b>Description</b>	Rabbit Polyclonal Antibody
<b>Host</b>	Rabbit
<b>Application</b>	WB
<b>Reactivity</b>	Human,Rat,Mouse

## Performance

<b>Conjugation</b>	Unconjugated
<b>Modification</b>	Unmodified
<b>Isotype</b>	IgG
<b>Clonality</b>	Polyclonal
<b>Form</b>	Liquid
<b>Storage</b>	Store at 4°C short term. Aliquot and store at -20°C long term. Avoid freeze/thaw cycles.
<b>Buffer</b>	Liquid in PBS containing 50% glycerol, 0.5% BSA and 0.02% New type preservative N.
<b>Purification</b>	Affinity purification

## Immunogen

<b>Gene Name</b>	ZNF541
<b>Alternative Names</b>	ZNF541; Zinc finger protein 541
<b>Gene ID</b>	84215.0
<b>SwissProt ID</b>	Q9H0D2.The antiserum was produced against synthesized peptide derived from human ZNF541. AA range:931-980

## Application

<b>Dilution Ratio</b>	WB 1:500-1:2000. ELISA: 1:20000.
<b>Molecular Weight</b>	83kD

## Background

function:Component of some chromatin remodeling multiprotein complex that plays a role during

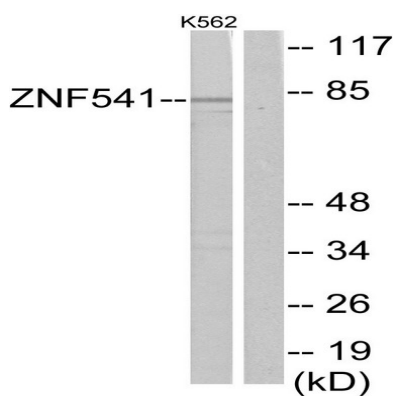
**Product Name: ZNF541 Rabbit Polyclonal Antibody**  
**Catalog #: APRab20271**



spermatogenesis.,similarity:Contains 1 ELM2 domain.,similarity:Contains 1 SANT domain.,similarity:Contains 5 C2H2-type zinc fingers.,subunit:Interacts with HDAC1 and HSPA2.,function:Component of some chromatin remodeling multiprotein complex that plays a role during spermatogenesis.,similarity:Contains 1 ELM2 domain.,similarity:Contains 1 SANT domain.,similarity:Contains 5 C2H2-type zinc fingers.,subunit:Interacts with HDAC1 and HSPA2.,

## Research Area

## Image Data



Western blot analysis of lysates from K562 cells, using ZNF541 Antibody. The lane on the right is blocked with the synthesized peptide.

## Note

For research use only.