
Summary

Production Name	ZNF498 Rabbit Polyclonal Antibody
Description	Rabbit Polyclonal Antibody
Host	Rabbit
Application	WB,ELISA
Reactivity	Human,Monkey

Performance

Conjugation	Unconjugated
Modification	Unmodified
Isotype	IgG
Clonality	Polyclonal
Form	Liquid
Storage	Store at 4°C short term. Aliquot and store at -20°C long term. Avoid freeze/thaw cycles.
Buffer	Liquid in PBS containing 50% glycerol, 0.5% BSA and 0.02% New type preservative N.
Purification	Affinity purification

Immunogen

Gene Name	ZNF498
Alternative Names	ZNF498; ZSCAN25; Zinc finger protein 498; Zinc finger and SCAN domain-containing protein 25
Gene ID	221785.0
SwissProt ID	Q6NSZ9.The antiserum was produced against synthesized peptide derived from human ZNF498. AA range:331-380

Application

Dilution Ratio	WB 1:500 - 1:2000. ELISA: 1:40000.
Molecular Weight	30kD

Product Name: ZNF498 Rabbit Polyclonal Antibody
Catalog #: APRab20270

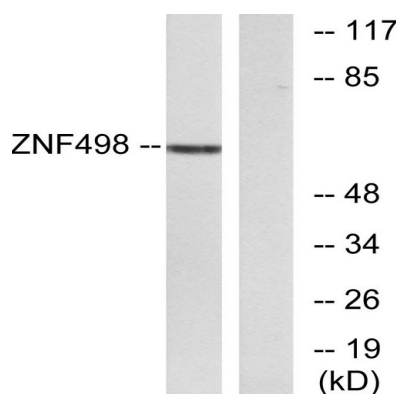


Background

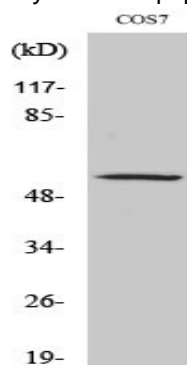
This gene encodes a protein that bears some similarity to zinc finger proteins, which are involved in DNA binding and protein-protein interactions. Multiple alternatively spliced transcript variants have been identified, but the full-length nature for most of them has not been determined. [provided by RefSeq, Jul 2008],function:May be involved in transcriptional regulation.,sequence caution:Wrong choice of frame.,similarity:Belongs to the krueppel C2H2-type zinc-finger protein family.,similarity:Contains 1 SCAN box domain.,similarity:Contains 7 C2H2-type zinc fingers.,

Research Area

Image Data



Western blot analysis of lysates from COS7 cells, using ZNF498 Antibody. The lane on the right is blocked with the synthesized peptide.



Western Blot analysis of various cells using ZNF498 Polyclonal Antibody. Secondary antibody was diluted at 1:20000 cells nucleus extracted by Minute TM Cytoplasmic and Nuclear Fractionation kit (SC-003, Invent biotech, MN, USA) .

Note

For research use only.