
Summary

Production Name	ZNF420 Rabbit Polyclonal Antibody
Description	Rabbit Polyclonal Antibody
Host	Rabbit
Application	WB,ELISA
Reactivity	Human,Mouse

Performance

Conjugation	Unconjugated
Modification	Unmodified
Isotype	IgG
Clonality	Polyclonal
Form	Liquid
Storage	Store at 4°C short term. Aliquot and store at -20°C long term. Avoid freeze/thaw cycles.
Buffer	Liquid in PBS containing 50% glycerol, 0.5% BSA and 0.02% New type preservative N.
Purification	Affinity purification

Immunogen

Gene Name	ZNF420
Alternative Names	ZNF420; Zinc finger protein 420
Gene ID	147923.0
SwissProt ID	Q8TAQ5.The antiserum was produced against synthesized peptide derived from human ZNF420. AA range:301-350

Application

Dilution Ratio	WB 1:500 - 1:2000. ELISA: 1:40000. Not yet tested in other applications.
Molecular Weight	80kD

Background

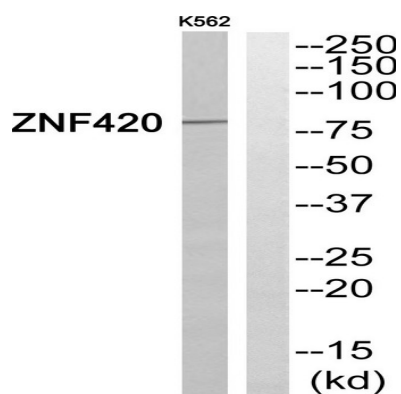
Product Name: ZNF420 Rabbit Polyclonal Antibody
Catalog #: APRab20264



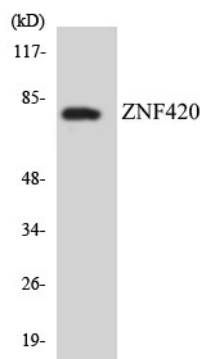
zinc finger protein 420(ZNF420) Homo sapiens The protein encoded by this gene is a KRAB-type zinc finger protein that negatively-regulates p53-mediated apoptosis. Under stress conditions, the encoded protein is phosphorylated by ATM and dissociates from p53, which activates p53 and initiates apoptosis. [provided by RefSeq, Jul 2016],function:May be involved in transcriptional regulation.,PTM:Phosphorylated upon DNA damage, probably by ATM or ATR.,similarity:Contains 1 KRAB domain.,similarity:Contains 19 C2H2-type zinc fingers.,

Research Area

Image Data

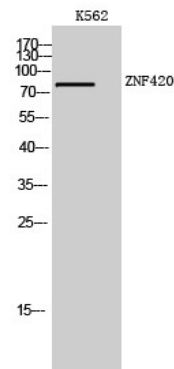


Western blot analysis of ZNF420 Antibody. The lane on the right is blocked with the ZNF420 peptide.



Western blot analysis of the lysates from COLO205 cells using ZNF420 antibody.

Product Name: ZNF420 Rabbit Polyclonal Antibody
Catalog #: APRab20264



Western Blot analysis of K562 cells using ZNF420 Polyclonal Antibody. Secondary antibody was diluted at 1:20000 cells nucleus extracted by Minute TM Cytoplasmic and Nuclear Fractionation kit (SC-003, Inventbiotech, MN, USA) .

Note

For research use only.