

---

## Summary

<b>Production Name</b>	ZNF337 Rabbit Polyclonal Antibody
<b>Description</b>	Rabbit Polyclonal Antibody
<b>Host</b>	Rabbit
<b>Application</b>	WB,ELISA
<b>Reactivity</b>	Human,Rat,Mouse

## Performance

<b>Conjugation</b>	Unconjugated
<b>Modification</b>	Unmodified
<b>Isotype</b>	IgG
<b>Clonality</b>	Polyclonal
<b>Form</b>	Liquid
<b>Storage</b>	Store at 4°C short term. Aliquot and store at -20°C long term. Avoid freeze/thaw cycles.
<b>Buffer</b>	Liquid in PBS containing 50% glycerol, 0.5% BSA and 0.02% New type preservative N.
<b>Purification</b>	Affinity purification

## Immunogen

<b>Gene Name</b>	ZNF337
<b>Alternative Names</b>	ZNF337; Zinc finger protein 337
<b>Gene ID</b>	26152.0
<b>SwissProt ID</b>	Q9Y3M9.The antiserum was produced against synthesized peptide derived from human ZNF337. AA range:471-520

## Application

<b>Dilution Ratio</b>	WB 1:500 - 1:2000. ELISA: 1:20000
<b>Molecular Weight</b>	86kD

## Background

---

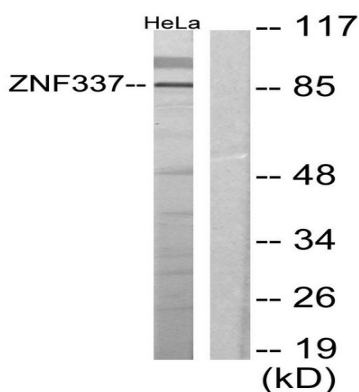
**Product Name: ZNF337 Rabbit Polyclonal Antibody**  
**Catalog #: APRab20260**



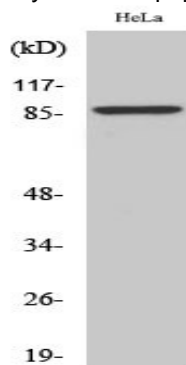
zinc finger protein 337(ZNF337) Homo sapiens This gene encodes a zinc finger domain containing protein. The function of this protein has yet to be determined. Alternative splicing results in multiple transcript variants. [provided by RefSeq, Mar 2014],function:May be involved in transcriptional regulation.,similarity:Belongs to the krueppel C2H2-type zinc-finger protein family.,similarity:Contains 1 KRAB domain.,similarity:Contains 20 C2H2-type zinc fingers.,

## Research Area

## Image Data



Western blot analysis of lysates from HeLa cells, using ZNF337 Antibody. The lane on the right is blocked with the synthesized peptide.



Western Blot analysis of various cells using ZNF337 Polyclonal Antibody. Secondary antibody was diluted at 1:20000 cells nucleus extracted by Minute TM Cytoplasmic and Nuclear Fractionation kit (SC-003, Invent biotech, MN, USA) .

## Note

For research use only.