
Summary

Production Name	ZNF329 Rabbit Polyclonal Antibody
Description	Rabbit Polyclonal Antibody
Host	Rabbit
Application	WB,ELISA
Reactivity	Human,Rat,Mouse

Performance

Conjugation	Unconjugated
Modification	Unmodified
Isotype	IgG
Clonality	Polyclonal
Form	Liquid
Storage	Store at 4°C short term. Aliquot and store at -20°C long term. Avoid freeze/thaw cycles.
Buffer	Liquid in PBS containing 50% glycerol, 0.5% BSA and 0.02% New type preservative N.
Purification	Affinity purification

Immunogen

Gene Name	ZNF329
Alternative Names	ZNF329; Zinc finger protein 329
Gene ID	79673.0
SwissProt ID	Q86UD4.The antiserum was produced against synthesized peptide derived from human ZNF329. AA range:81-130

Application

Dilution Ratio	WB 1:500 - 1:2000. ELISA: 1:40000
Molecular Weight	61kD

Background

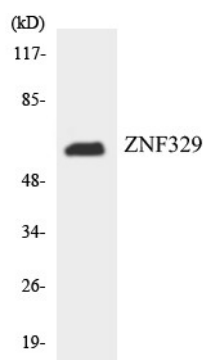
Product Name: ZNF329 Rabbit Polyclonal Antibody
Catalog #: APRab20259



function:May be involved in transcriptional regulation.,similarity:Belongs to the krueppel C2H2-type zinc-finger protein family.,similarity:Contains 12 C2H2-type zinc fingers.,function:May be involved in transcriptional regulation.,similarity:Belongs to the krueppel C2H2-type zinc-finger protein family.,similarity:Contains 12 C2H2-type zinc fingers.,

Research Area

Image Data



Western blot analysis of the lysates from RAW264.7 cells using ZNF329 antibody.



Western Blot analysis of various cells using ZNF329 Polyclonal Antibody. Secondary antibody was diluted at 1:20000 cells nucleus extracted by Minute TM Cytoplasmic and Nuclear Fractionation kit (SC-003, Inventbiotech, MN, USA) .

Note

For research use only.