

Summary

Production Name	ZNF227 Rabbit Polyclonal Antibody
Description	Rabbit Polyclonal Antibody
Host	Rabbit
Application	WB,IHC,
Reactivity	Human,Rat,Mouse

Performance

Conjugation	Unconjugated
Modification	Unmodified
Isotype	IgG
Clonality	Polyclonal
Form	Liquid
Storage	Store at 4°C short term. Aliquot and store at -20°C long term. Avoid freeze/thaw cycles.
Buffer	Liquid in PBS containing 50% glycerol, 0.5% BSA and 0.02% New type preservative N.
Purification	Affinity purification

Immunogen

Gene Name	ZNF227
Alternative Names	ZNF227; Zinc finger protein 227
Gene ID	7770.0
SwissProt ID	Q86WZ6.Synthesized peptide derived from the Internal region of human ZNF227.

Application

Dilution Ratio	WB 1:500 - 1:2000. IHC-p: 1:100-300 ELISA: 1:40000..
Molecular Weight	92kD

Background

function:May be involved in transcriptional regulation.,similarity:Belongs to the krueppel C2H2-type zinc-finger protein

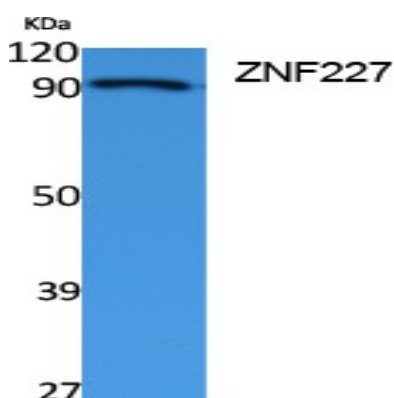
Product Name: ZNF227 Rabbit Polyclonal Antibody
Catalog #: APRab20252



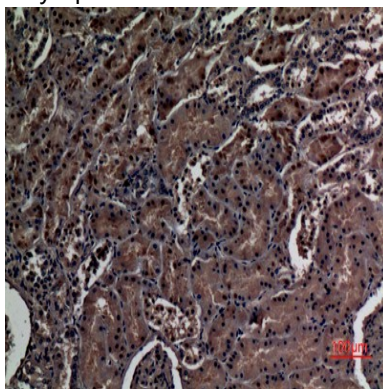
family.,similarity:Contains 1 KRAB domain.,similarity:Contains 19 C2H2-type zinc fingers.,function:May be involved in transcriptional regulation.,similarity:Belongs to the krueppel C2H2-type zinc-finger protein family.,similarity:Contains 1 KRAB domain.,similarity:Contains 19 C2H2-type zinc fingers.,

Research Area

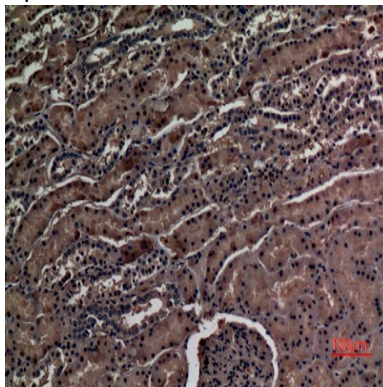
Image Data



Western Blot analysis of extracts from Jurkat cells, using ZNF227 Polyclonal Antibody.. Secondary antibody was diluted at 1:20000 cells nucleus extracted by Minute TM Cytoplasmic and Nuclear Fractionation kit (SC-003, Invent biotech, MN, USA) .



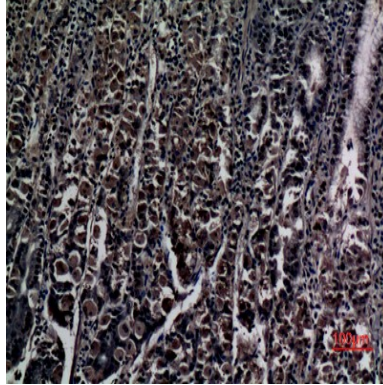
Immunohistochemical analysis of paraffin-embedded human-kidney, antibody was diluted at 1:100



Product Name: ZNF227 Rabbit Polyclonal Antibody
Catalog #: APRab20252



Immunohistochemical analysis of paraffin-embedded human-kidney, antibody was diluted at 1:100



Immunohistochemical analysis of paraffin-embedded human-stomach, antibody was diluted at 1:100

Note

For research use only.