

Summary

| | |
|------------------------|----------------------------------|
| Production Name | ZN497 Rabbit Polyclonal Antibody |
| Description | Rabbit Polyclonal Antibody |
| Host | Rabbit |
| Application | WB |
| Reactivity | Human,Rat,Mouse |

Performance

| | |
|---------------------|--|
| Conjugation | Unconjugated |
| Modification | Unmodified |
| Isotype | IgG |
| Clonality | Polyclonal |
| Form | Liquid |
| Storage | Store at 4°C short term. Aliquot and store at -20°C long term. Avoid freeze/thaw cycles. |
| Buffer | Liquid in PBS containing 50% glycerol, and 0.02% New type preservative N. |
| Purification | Affinity purification |

Immunogen

| | |
|--------------------------|--|
| Gene Name | ZNF497 |
| Alternative Names | |
| Gene ID | 162968.0 |
| SwissProt ID | Q6ZNH5.Synthesized peptide derived from part region of human protein |

Application

| | |
|-------------------------|----------------------------------|
| Dilution Ratio | WB 1:500-2000 ELISA 1:5000-20000 |
| Molecular Weight | 54kD |

Background

function:May be involved in transcriptional regulation.,similarity:Belongs to the krueppel C2H2-type zinc-finger protein family.,similarity:Contains 14 C2H2-type zinc fingers.,function:May be involved in transcriptional

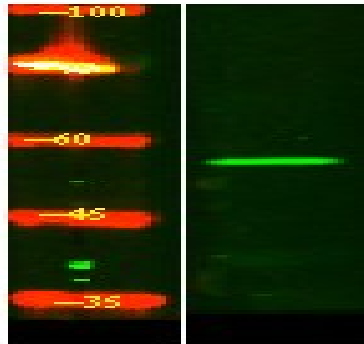
Product Name: ZN497 Rabbit Polyclonal Antibody
Catalog #: APRab20178



regulation.,similarity:Belongs to the krueppel C2H2-type zinc-finger protein family.,similarity:Contains 14 C2H2-type zinc fingers.,

Research Area

Image Data



Western Blot analysis of HeLa lysis, using primary antibody at 1:1000 dilution. Secondary antibody was diluted at 1:10000

Note

For research use only.