

Summary

Production Name	ZN462 Rabbit Polyclonal Antibody
Description	Rabbit Polyclonal Antibody
Host	Rabbit
Application	WB,ELISA
Reactivity	Human,Rat,Mouse

Performance

Conjugation	Unconjugated
Modification	Unmodified
Isotype	IgG
Clonality	Polyclonal
Form	Liquid
Storage	Store at 4°C short term. Aliquot and store at -20°C long term. Avoid freeze/thaw cycles.
Buffer	Liquid in PBS containing 50% glycerol, and 0.02% New type preservative N.
Purification	Affinity purification

Immunogen

Gene Name	ZNF462 KIAA1803
Alternative Names	
Gene ID	58499.0
SwissProt ID	Q96JM2.Synthesized peptide derived from part region of human protein

Application

Dilution Ratio	IHC 1:50-300
Molecular Weight	275kD

Background

function:May be involved in transcriptional regulation.,PTM:Phosphorylated upon DNA damage, probably by ATM or ATR.,similarity:Contains 27 C2H2-type zinc fingers.,function:May be involved in transcriptional

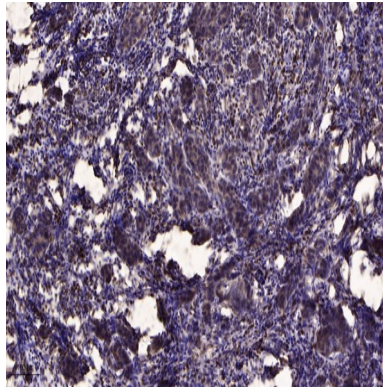
Product Name: ZN462 Rabbit Polyclonal Antibody
Catalog #: APRab20173



regulation.,PTM:Phosphorylated upon DNA damage, probably by ATM or ATR.,similarity:Contains 27 C2H2-type zinc fingers.,

Research Area

Image Data



Immunohistochemical analysis of paraffin-embedded human Breast cancer. 1, Antibody was diluted at 1:200 (4° overnight) . 2, Tris-EDTA,pH9.0 was used for antigen retrieval. 3,Secondary antibody was diluted at 1:200 (room temperature, 45min) .

Note

For research use only.