

## Summary

<b>Production Name</b>	ZFYVE19 Rabbit Polyclonal Antibody
<b>Description</b>	Rabbit Polyclonal Antibody
<b>Host</b>	Rabbit
<b>Application</b>	IHC, WB, ELISA
<b>Reactivity</b>	Human, Rat, Mouse

## Performance

<b>Conjugation</b>	Unconjugated
<b>Modification</b>	Unmodified
<b>Isotype</b>	IgG
<b>Clonality</b>	Polyclonal
<b>Form</b>	Liquid
<b>Storage</b>	Store at 4°C short term. Aliquot and store at -20°C long term. Avoid freeze/thaw cycles.
<b>Buffer</b>	Liquid in PBS containing 50% glycerol, 0.5% BSA and 0.02% New type preservative N.
<b>Purification</b>	Affinity purification

## Immunogen

<b>Gene Name</b>	ZFYVE19
<b>Alternative Names</b>	ZFYVE19; MPFYVE; Zinc finger FYVE domain-containing protein 19; MLL partner containing FYVE domain
<b>Gene ID</b>	84936.0
<b>SwissProt ID</b>	Q96K21. The antiserum was produced against synthesized peptide derived from human ZFYVE19. AA range:311-360

## Application

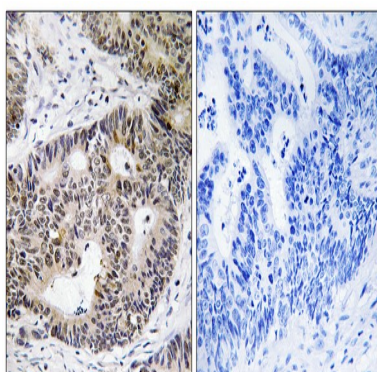
<b>Dilution Ratio</b>	WB 1:500 - 1:2000. IHC 1:100 - 1:300. ELISA: 1:40000..
<b>Molecular Weight</b>	50kD

## Background

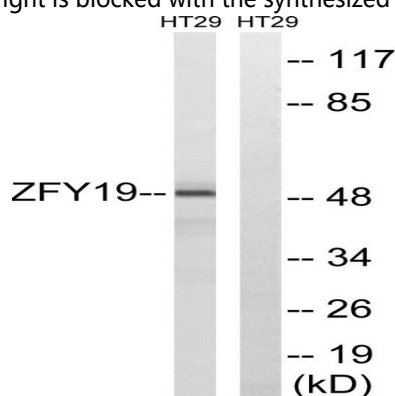
disease:A chromosomal aberration involving ZFYVE19 is associated with acute myeloblastic leukemia (AML). Translocation t(11;15)(q23;q14) with MLL/HRX.,PTM:Phosphorylated upon DNA damage, probably by ATM or ATR.,similarity:Contains 1 FYVE-type zinc finger.,tissue specificity:Detected in brain, heart, skeletal muscle, kidney and liver.,disease:A chromosomal aberration involving ZFYVE19 is associated with acute myeloblastic leukemia (AML). Translocation t(11;15)(q23;q14) with MLL/HRX.,PTM:Phosphorylated upon DNA damage, probably by ATM or ATR.,similarity:Contains 1 FYVE-type zinc finger.,tissue specificity:Detected in brain, heart, skeletal muscle, kidney and liver.,

## Research Area

## Image Data

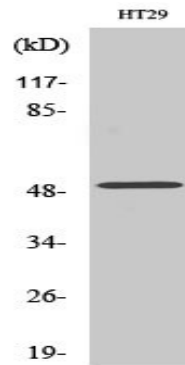


Immunohistochemistry analysis of paraffin-embedded human colon carcinoma tissue, using ZFYVE19 Antibody. The picture on the right is blocked with the synthesized peptide.



Western blot analysis of lysates from HT-29 cells, using ZFYVE19 Antibody. The lane on the right is blocked with the synthesized peptide.

**Product Name: ZFYVE19 Rabbit Polyclonal Antibody**  
**Catalog #: APRab20097**



Western Blot analysis of various cells using ZFYVE19 Polyclonal Antibody. Secondary antibody was diluted at 1:20000

**Note**

For research use only.