
Summary

Production Name	ZFP106 Rabbit Polyclonal Antibody
Description	Rabbit Polyclonal Antibody
Host	Rabbit
Application	WB,ELISA
Reactivity	Human,Mouse,Monkey

Performance

Conjugation	Unconjugated
Modification	Unmodified
Isotype	IgG
Clonality	Polyclonal
Form	Liquid
Storage	Store at 4°C short term. Aliquot and store at -20°C long term. Avoid freeze/thaw cycles.
Buffer	Liquid in PBS containing 50% glycerol, 0.5% BSA and 0.02% New type preservative N.
Purification	Affinity purification

Immunogen

Gene Name	ZFP106
Alternative Names	ZFP106; SH3BP3; ZNF474; Zinc finger protein 106 homolog; Zfp-106; Zinc finger protein 474
Gene ID	64397.0
SwissProt ID	Q9H2Y7.The antiserum was produced against synthesized peptide derived from human ZFP106. AA range:1833-1882

Application

Dilution Ratio	WB 1:500 - 1:2000. ELISA: 1:10000. Not yet tested in other applications.
Molecular Weight	209kD

Product Name: ZFP106 Rabbit Polyclonal Antibody
Catalog #: APRab20087



Background

PTM:Phosphorylated upon DNA damage, probably by ATM or ATR.,sequence caution:Contaminating sequence. Potential poly-A sequence.,similarity:Contains 2 C2H2-type zinc fingers.,similarity:Contains 6 WD repeats.,subunit:Interacts with TSG118.,PTM:Phosphorylated upon DNA damage, probably by ATM or ATR.,sequence caution:Contaminating sequence. Potential poly-A sequence.,similarity:Contains 2 C2H2-type zinc fingers.,similarity:Contains 6 WD repeats.,subunit:Interacts with TSG118.,

Research Area

Image Data

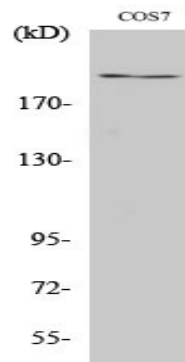


Western blot analysis of lysate from COS7 cells, using ZFP106 antibody.



Western Blot analysis of various cells using ZFP106 Polyclonal Antibody. Secondary antibody was diluted at 1:20000

Product Name: ZFP106 Rabbit Polyclonal Antibody
Catalog #: APRab20087



Western Blot analysis of COS7 cells using ZFP106 Polyclonal Antibody. Secondary antibody was diluted at 1:20000

Note

For research use only.