

Summary

Production Name	ZFHX2 Rabbit Polyclonal Antibody
Description	Rabbit Polyclonal Antibody
Host	Rabbit
Application	WB,ELISA
Reactivity	Human,Rat,Mouse

Performance

Conjugation	Unconjugated
Modification	Unmodified
Isotype	IgG
Clonality	Polyclonal
Form	Liquid
Storage	Store at 4°C short term. Aliquot and store at -20°C long term. Avoid freeze/thaw cycles.
Buffer	Liquid in PBS containing 50% glycerol, and 0.02% New type preservative N.
Purification	Affinity purification

Immunogen

Gene Name	ZFHX2 KIAA1056 KIAA1762 ZNF409
Alternative Names	
Gene ID	85446.0
SwissProt ID	Q9C0A1.Synthesized peptide derived from part region of human protein

Application

Dilution Ratio	IHC 1:50-300
Molecular Weight	282kD

Background

function:May be involved in transcriptional regulation.,similarity:Contains 3 homeobox DNA-binding domains.,similarity:Contains 6 C2H2-type zinc fingers.,function:May be involved in transcriptional

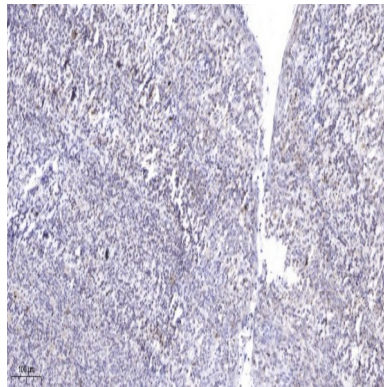
Product Name: ZFH2 Rabbit Polyclonal Antibody
Catalog #: APRab20082



regulation.,similarity:Contains 3 homeobox DNA-binding domains.,similarity:Contains 6 C2H2-type zinc fingers.,

Research Area

Image Data



Immunohistochemical analysis of paraffin-embedded human tonsil. 1, Antibody was diluted at 1:200 (4° overnight) . 2, Tris-EDTA,pH9.0 was used for antigen retrieval. 3,Secondary antibody was diluted at 1:200 (room temperature, 45min) .

Note

For research use only.