

Summary

Production Name	ZDHHC9 Rabbit Polyclonal Antibody
Description	Rabbit Polyclonal Antibody
Host	Rabbit
Application	IHC, WB, ELISA
Reactivity	Human, Mouse, Rat

Performance

Conjugation	Unconjugated
Modification	Unmodified
Isotype	IgG
Clonality	Polyclonal
Form	Liquid
Storage	Store at 4°C short term. Aliquot and store at -20°C long term. Avoid freeze/thaw cycles.
Buffer	Liquid in PBS containing 50% glycerol, 0.5% BSA and 0.02% New type preservative N.
Purification	Affinity purification

Immunogen

Gene Name	ZDHHC9 ZDHHC9; CXorf11; ZDHHC10; ZNF379; ZNF380; CGI-89; Palmitoyltransferase ZDHHC9;
Alternative Names	Zinc finger DHHC domain-containing protein 9; DHHC-9; DHHC9; Zinc finger protein 379; Zinc finger protein 380
Gene ID	51114.0
SwissProt ID	Q9Y397. The antiserum was produced against synthesized peptide derived from human ZDHHC9. AA range: 315-364

Application

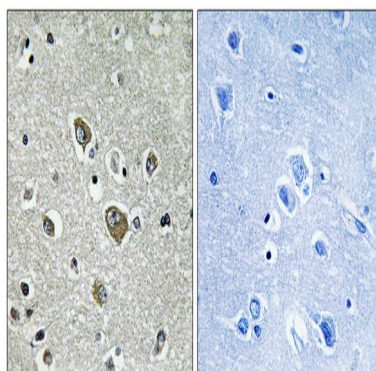
Dilution Ratio	WB 1:500 - 1:2000. IHC 1:100 - 1:300. ELISA: 1:40000..
Molecular Weight	41kD

Background

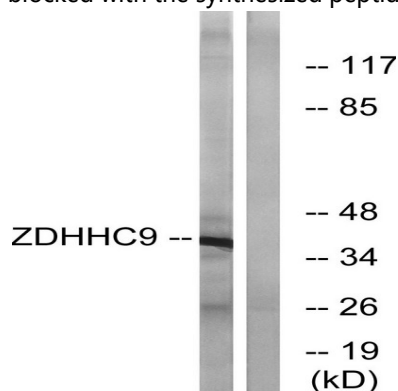
This gene encodes an integral membrane protein that is a member of the zinc finger DHHC domain-containing protein family. The encoded protein forms a complex with golgin subfamily A member 7 and functions as a palmitoyltransferase. This protein specifically palmitoylates HRAS and NRAS. Mutations in this gene are associated with X-linked mental retardation. Alternate splicing results in multiple transcript variants that encode the same protein.[provided by RefSeq, May 2010],catalytic activity:Palmitoyl-CoA + protein-cysteine = S-palmitoyl protein + CoA.,domain:The DHHC domain is required for palmitoyltransferase activity.,function:The ZDHHC9-GOLGA7 complex is a palmitoyltransferase specific for HRAS and NRAS.,similarity:Belongs to the DHHC palmitoyltransferase family. ERF2/ZDHHC9 subfamily.,similarity:Contains 1 DHHC-type zinc finger.,subunit:Interacts with GOLGA7.,tissue specificity:Highly expressed in kidney, skeletal muscle, brain, lung and liver. Absent in thymus, spleen and leukocytes.,

Research Area

Image Data

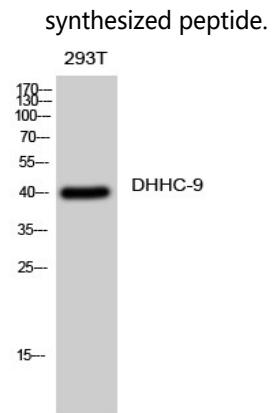


Immunohistochemistry analysis of paraffin-embedded human brain tissue, using ZDHHC9 Antibody. The picture on the right is blocked with the synthesized peptide.



Western blot analysis of lysates from COLO cells, using ZDHHC9 Antibody. The lane on the right is blocked with the

Product Name: ZDHHC9 Rabbit Polyclonal Antibody
Catalog #: APRab20075



Western Blot analysis of 293T cells using DHHHC-9 Polyclonal Antibody diluted at 1 : 1000

Note

For research use only.