

Summary

Production Name	ZDHHC20 Rabbit Polyclonal Antibody
Description	Rabbit Polyclonal Antibody
Host	Rabbit
Application	WB
Reactivity	Human,Mouse,Rat

Performance

Conjugation	Unconjugated
Modification	Unmodified
Isotype	IgG
Clonality	Polyclonal
Form	Liquid
Storage	Store at 4°C short term. Aliquot and store at -20°C long term. Avoid freeze/thaw cycles.
Buffer	Liquid in PBS containing 50% glycerol, 0.5% BSA and 0.02% New type preservative N.
Purification	Affinity purification

Immunogen

Gene Name	ZDHHC20
Alternative Names	ZDHHC20; Probable palmitoyltransferase ZDHHC20; Zinc finger DHHC domain-containing protein 20; DHHC-20
Gene ID	253832.0
SwissProt ID	Q5W0Z9.The antiserum was produced against synthesized peptide derived from human ZDHHC20. AA range:72-121

Application

Dilution Ratio	WB 1:500-1:2000. ELISA: 1:10000.
Molecular Weight	37kD

Background

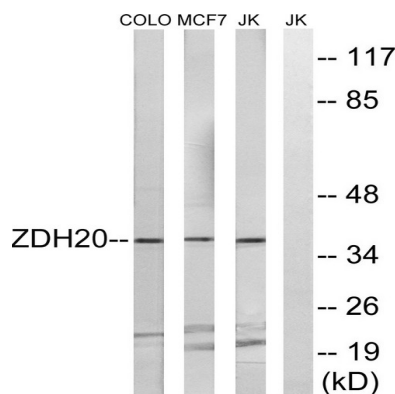
Product Name: ZDHHC20 Rabbit Polyclonal Antibody
Catalog #: APRab20069



catalytic activity:Palmitoyl-CoA + protein-cysteine = S-palmitoyl protein + CoA.,domain:The DHHC domain is required for palmitoyltransferase activity.,PTM:Phosphorylated upon DNA damage, probably by ATM or ATR.,similarity:Belongs to the DHHC palmitoyltransferase family.,similarity:Contains 1 DHHC-type zinc finger.,catalytic activity:Palmitoyl-CoA + protein-cysteine = S-palmitoyl protein + CoA.,domain:The DHHC domain is required for palmitoyltransferase activity.,PTM:Phosphorylated upon DNA damage, probably by ATM or ATR.,similarity:Belongs to the DHHC palmitoyltransferase family.,similarity:Contains 1 DHHC-type zinc finger.,

Research Area

Image Data



Western blot analysis of lysates from Jurkat, MCF-7, and COLO cells, using ZDHHC20 Antibody. The lane on the right is blocked with the synthesized peptide.

Note

For research use only.