

Product Name: ZC3H4 Rabbit Polyclonal Antibody
Catalog #: APRab20054



Summary

Production Name	ZC3H4 Rabbit Polyclonal Antibody
Description	Rabbit Polyclonal Antibody
Host	Rabbit
Application	IHC,ELISA
Reactivity	Human,Mouse

Performance

Conjugation	Unconjugated
Modification	Unmodified
Isotype	IgG
Clonality	Polyclonal
Form	Liquid
Storage	Store at 4°C short term. Aliquot and store at -20°C long term. Avoid freeze/thaw cycles.
Buffer	Liquid in PBS containing 50% glycerol, 0.5% BSA and 0.02% New type preservative N.
Purification	Affinity purification

Immunogen

Gene Name	ZC3H4
Alternative Names	ZC3H4; C19orf7; KIAA1064; Zinc finger CCCH domain-containing protein 4
Gene ID	23211.0
SwissProt ID	Q9UPT8.The antiserum was produced against synthesized peptide derived from human ZC3H4. AA range:771-820

Application

Dilution Ratio	IHC 1:100-1:300 ELISA: 1:10000
Molecular Weight	

Background

This gene encodes a member of a family of CCCH (C-x8-C-x5-C-x3-H type) zinc finger domain-containing proteins. These

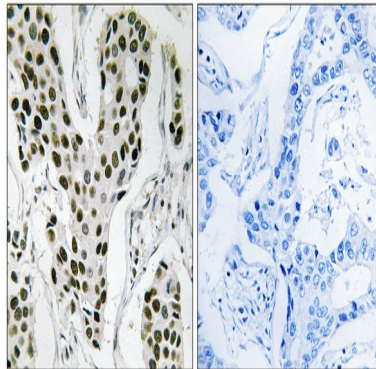
Product Name: ZC3H4 Rabbit Polyclonal Antibody
Catalog #: APRab20054



zinc finger domains, which coordinate zinc finger binding and are characterized by three cysteine residues and one histidine residue, are nucleic acid-binding. Other family members are known to function in post-transcriptional regulation. [provided by RefSeq, Aug 2011],PTM:Phosphorylated upon DNA damage, probably by ATM or ATR.,similarity:Contains 3 C3H1-type zinc fingers.,

Research Area

Image Data



Immunohistochemistry analysis of paraffin-embedded human breast carcinoma tissue, using ZC3H4 Antibody. The picture on the right is blocked with the synthesized peptide.

Note

For research use only.