

Summary

Production Name	XPLN Rabbit Polyclonal Antibody
Description	Rabbit Polyclonal Antibody
Host	Rabbit
Application	WB,ELISA
Reactivity	Human,Mouse,Rat

Performance

Conjugation	Unconjugated
Modification	Unmodified
Isotype	IgG
Clonality	Polyclonal
Form	Liquid
Storage	Store at 4°C short term. Aliquot and store at -20°C long term. Avoid freeze/thaw cycles.
Buffer	Liquid in PBS containing 50% glycerol, 0.5% BSA and 0.02% New type preservative N.
Purification	Affinity purification

Immunogen

Gene Name	ARHGEF3
Alternative Names	ARHGEF3; Rho guanine nucleotide exchange factor 3; Exchange factor found in platelets and leukemic and neuronal tissues; XPLN
Gene ID	50650.0
SwissProt ID	Q9NR81.The antiserum was produced against synthesized peptide derived from human ARHGEF3. AA range:456-505

Application

Dilution Ratio	WB 1:500 - 1:2000.ELISA: 1:20000..
Molecular Weight	55kD

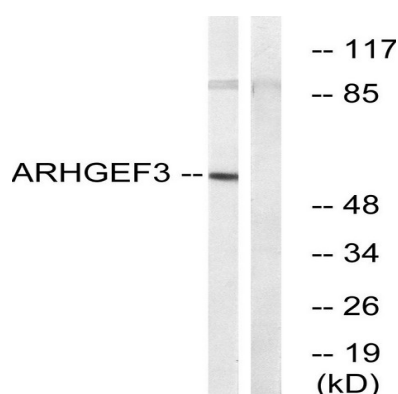
Background

Rho-like GTPases are involved in a variety of cellular processes, and they are activated by binding GTP and inactivated by conversion of GTP to GDP by their intrinsic GTPase activity. Guanine nucleotide exchange factors (GEFs) accelerate the GTPase activity of Rho GTPases by catalyzing their release of bound GDP. This gene encodes a guanine nucleotide exchange factor, which specifically activates two members of the Rho GTPase family: RHOA and RHOB, both of which have a role in bone cell biology. It has been identified that genetic variation in this gene plays a role in the determination of bone mineral density (BMD), indicating the implication of this gene in postmenopausal osteoporosis. Alternatively spliced transcript variants encoding different isoforms have been found for this gene. [provided by RefSeq, Jul 2008],function:Acts as guanine nucleotide exchange factor (GEF) for RhoA and RhoB GTPases.,similarity:Contains 1 DH (DBL-homology) domain.,similarity:Contains 1 PH domain.,subunit:Interacts with RHOA and RHOB.,tissue specificity:Widely expressed. Highest levels are found in adult brain and skeletal muscle. Lower levels are found in heart and kidney.,

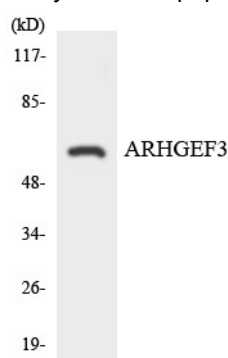
Research Area

Regulation of Actin Dynamics; AMPK

Image Data

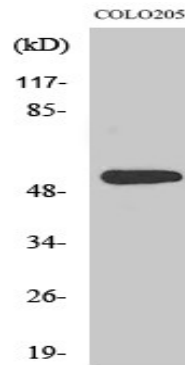


Western blot analysis of lysates from COLO cells, using ARHGEF3 Antibody. The lane on the right is blocked with the synthesized peptide.



Western blot analysis of the lysates from HeLa cells using ARHGEF3 antibody.

Product Name: XPLN Rabbit Polyclonal Antibody
Catalog #: APRab19962



Western Blot analysis of various cells using XPLN Polyclonal Antibody. Secondary antibody was diluted at 1:20000

Note

For research use only.