

Summary

Production Name	XE7 Rabbit Polyclonal Antibody
Description	Rabbit Polyclonal Antibody
Host	Rabbit
Application	WB
Reactivity	Human,Rat,Mouse

Performance

Conjugation	Unconjugated
Modification	Unmodified
Isotype	IgG
Clonality	Polyclonal
Form	Liquid
Storage	Store at 4°C short term. Aliquot and store at -20°C long term. Avoid freeze/thaw cycles.
Buffer	Liquid in PBS containing 50% glycerol, 0.5% BSA and 0.02% New type preservative N.
Purification	Affinity purification

Immunogen

Gene Name	AKAP17A AKAP17A; CXorf3; DXYS155E; SFRS17A; XE7; A-kinase anchor protein 17A; AKAP-17A;
Alternative Names	721P; B-lymphocyte antigen; Protein XE7; Protein kinase A-anchoring protein 17A; PRKA17A; Splicing factor; arginine/serine-rich 17A
Gene ID	8227.0
SwissProt ID	Q02040.Synthesized peptide derived from XE7 . at AA range: 590-670

Application

Dilution Ratio	WB 1:500-1:2000. ELISA: 1:40000.
Molecular Weight	80kD

Background

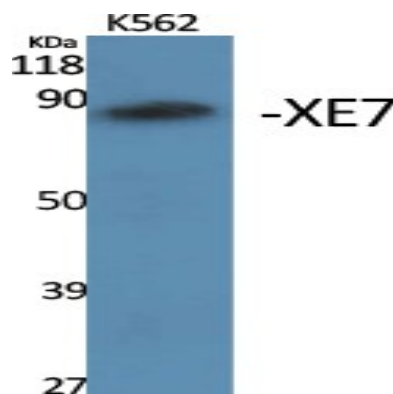
Product Name: XE7 Rabbit Polyclonal Antibody
Catalog #: APRab19951



A-kinase anchoring protein 17A(AKAP17A) Homo sapiens This locus encodes a protein kinase A anchoring protein. The encoded protein is part of the spliceosome complex and is involved in the regulation of alternate splicing in some mRNA precursors. Alternatively spliced transcript variants have been identified for this gene.[provided by RefSeq, Sep 2010],caution:Was originally (PubMed:1438229) thought to be a cell surface protein involved in B-cell activation.,function:Splice factor regulating alternative splice site selection for certain mRNA precursors.,miscellaneous:The gene encoding for this protein is located in the pseudoautosomal region 1 (PAR1) of X and Y chromosomes.,similarity:Contains 1 RRM (RNA recognition motif) domain.,subunit:Monomer. Component of the spliceosome. Interacts with ZRANB2 and SFRS1/ASF through its Arg/Ser-rich domain.,tissue specificity:Widely expressed. Found in heart, brain, lung, liver, skeletal muscle, kidney and pancreas. Expressed in activated B-cells and placenta.,

Research Area

Image Data



Western Blot analysis of various cells using XE7 Polyclonal Antibody. Secondary antibody was diluted at 1:20000 cells nucleus extracted by Minute TM Cytoplasmic and Nuclear Fractionation kit (SC-003, Invent biotech, MN, USA) .

Note

For research use only.