

Product Name: WTAP Rabbit Polyclonal Antibody
Catalog #: APRab19938



Summary

Production Name	WTAP Rabbit Polyclonal Antibody
Description	Rabbit Polyclonal Antibody
Host	Rabbit
Application	WB,ELISA
Reactivity	Human,Mouse

Performance

Conjugation	Unconjugated
Modification	Unmodified
Isotype	IgG
Clonality	Polyclonal
Form	Liquid
Storage	Store at 4°C short term. Aliquot and store at -20°C long term. Avoid freeze/thaw cycles.
Buffer	Liquid in PBS containing 50% glycerol, 0.5% BSA and 0.02% New type preservative N.
Purification	Affinity purification

Immunogen

Gene Name	WTAP
Alternative Names	WTAP; KIAA0105; Pre-mRNA-splicing regulator WTAP; Female-lethal(2)D homolog; hFL(2)D; WT1-associated protein; Wilms tumor 1-associating protein
Gene ID	9589.0
SwissProt ID	Q15007.The antiserum was produced against synthesized peptide derived from human WTAP. AA range:321-370

Application

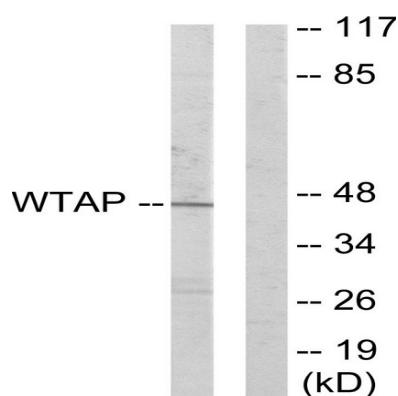
Dilution Ratio	WB 1:500 - 1:2000. ELISA: 1:20000
Molecular Weight	55kD

Background

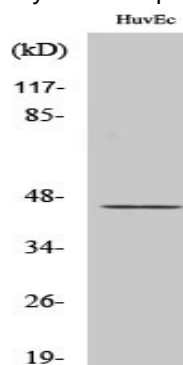
The Wilms tumor suppressor gene WT1 appears to play a role in both transcriptional and posttranscriptional regulation of certain cellular genes. This gene encodes a WT1-associating protein, which is a ubiquitously expressed nuclear protein. Like WT1 protein, this protein is localized throughout the nucleoplasm as well as in speckles and partially colocalizes with splicing factors. Alternative splicing of this gene results in several transcript variants encoding three different isoforms. [provided by RefSeq, Jul 2012],function:Regulates G2/M cell-cycle transition by binding to the 3' UTR of CCNA2, which enhances its stability. Impairs WT1 DNA-binding ability and inhibits expression of WT1 target genes. May be involved in mRNA splicing regulation.,induction:In smooth muscle cells, up-regulated after serum withdrawal, when cells become mature and non proliferative.,PTM:Phosphorylated upon DNA damage, probably by ATM or ATR.,similarity:Belongs to the fl(2)d family.,subunit:Interacts with WT1.,tissue specificity:Ubiquitously expressed.,

Research Area

Image Data



Western blot analysis of lysates from HUVEC cells, using WTAP Antibody. The lane on the right is blocked with the synthesized peptide.



Western Blot analysis of various cells using WTAP Polyclonal Antibody diluted at 1: 500. Secondary antibody was diluted at 1:20000 cells nucleus extracted by Minute TM Cytoplasmic and Nuclear Fractionation kit (SC-003, Inventbiotech, MN, USA) .

Product Name: WTAP Rabbit Polyclonal Antibody
Catalog #: APRab19938



Note

For research use only.