

Summary

Production Name	WDHD1 Rabbit Polyclonal Antibody
Description	Rabbit Polyclonal Antibody
Host	Rabbit
Application	WB,ELISA
Reactivity	Human,Rat,Mouse

Performance

Conjugation	Unconjugated
Modification	Unmodified
Isotype	IgG
Clonality	Polyclonal
Form	Liquid
Storage	Store at 4°C short term. Aliquot and store at -20°C long term. Avoid freeze/thaw cycles.
Buffer	Liquid in PBS containing 50% glycerol, 0.5% BSA and 0.02% New type preservative N.
Purification	Affinity purification

Immunogen

Gene Name	WDHD1
Alternative Names	WDHD1; AND1; WD repeat and HMG-box DNA-binding protein 1; Acidic nucleoplasmic DNA-binding protein 1; And-1
Gene ID	11169.0
SwissProt ID	O75717.The antiserum was produced against synthesized peptide derived from human WDHD1. AA range:721-770

Application

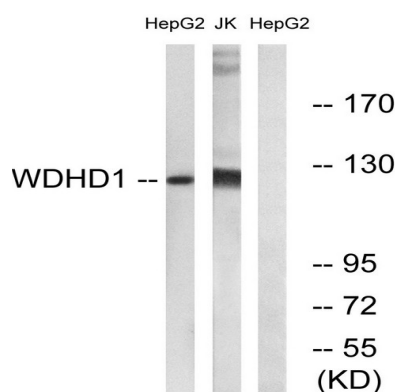
Dilution Ratio	WB 1:500 - 1:2000. ELISA: 1:10000
Molecular Weight	126kD

Background

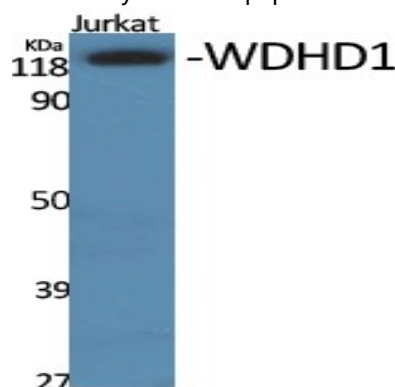
The protein encoded by this gene contains multiple N-terminal WD40 domains and a C-terminal high mobility group (HMG) box. WD40 domains are found in a variety of eukaryotic proteins and may function as adaptor/regulatory modules in signal transduction, pre-mRNA processing and cytoskeleton assembly. HMG boxes are found in many eukaryotic proteins involved in chromatin assembly, transcription and replication. Alternative splicing results in two transcript variants encoding different isoforms. [provided by RefSeq, Jul 2008],caution:The sequence shown here is derived from an Ensembl automatic analysis pipeline and should be considered as preliminary data.,function:Binds DNA with high affinity. May also be involved in protein-protein interactions.,PTM:Phosphorylated upon DNA damage, probably by ATM or ATR.,similarity:Contains 1 HMG box DNA-binding domain.,similarity:Contains 7 WD repeats.,

Research Area

Image Data



Western blot analysis of lysates from Jurkat and HepG2 cells, using WDHD1 Antibody. The lane on the right is blocked with the synthesized peptide.



Western Blot analysis of various cells using WDHD1 Polyclonal Antibody. Secondary antibody was diluted at 1:20000

Product Name: WDHD1 Rabbit Polyclonal Antibody
Catalog #: APRab19874



Note

For research use only.