

**Product Name: VPS35 Rabbit Polyclonal Antibody**  
**Catalog #: APRab19834**



## Summary

<b>Production Name</b>	VPS35 Rabbit Polyclonal Antibody
<b>Description</b>	Rabbit Polyclonal Antibody
<b>Host</b>	Rabbit
<b>Application</b>	WB
<b>Reactivity</b>	Human,Mouse,Rat

## Performance

<b>Conjugation</b>	Unconjugated
<b>Modification</b>	Unmodified
<b>Isotype</b>	IgG
<b>Clonality</b>	Polyclonal
<b>Form</b>	Liquid
<b>Storage</b>	Store at 4°C short term. Aliquot and store at -20°C long term. Avoid freeze/thaw cycles.
<b>Buffer</b>	Liquid in PBS containing 50% glycerol, 0.5% BSA and 0.02% New type preservative N.
<b>Purification</b>	Affinity purification

## Immunogen

<b>Gene Name</b>	VPS35
<b>Alternative Names</b>	Vacuolar protein sorting-associated protein 35 (hVPS35) (Maternal-embryonic 3) (Vesicle protein sorting 35)
<b>Gene ID</b>	55737.0
<b>SwissProt ID</b>	Q96QK1.Synthesized peptide derived from VPS35 at AA range: 511-560

## Application

<b>Dilution Ratio</b>	WB 1:500-2000, ELISA 1:10000-20000
<b>Molecular Weight</b>	92kD

## Background

This gene belongs to a group of vacuolar protein sorting (VPS) genes. The encoded protein is a component of a large

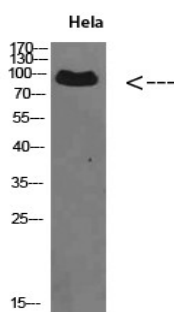
**Product Name: VPS35 Rabbit Polyclonal Antibody**  
**Catalog #: APRab19834**



multimeric complex, termed the retromer complex, involved in retrograde transport of proteins from endosomes to the trans-Golgi network. The close structural similarity between the yeast and human proteins that make up this complex suggests a similarity in function. Expression studies in yeast and mammalian cells indicate that this protein interacts directly with VPS35, which serves as the core of the retromer complex. [provided by RefSeq, Jul 2008],function:Essential component of the retromer complex, a complex required to retrieve lysosomal enzyme receptors (IGF2R and M6PR) from endosomes to the trans-Golgi network. Also required to regulate transcytosis of the polymeric immunoglobulin receptor (pIgR-pIgA).,similarity:Belongs to the VPS35 family.,subunit:Component of the retromer complex composed of VPS26 (VPS26A or VPS26B), VPS29, VPS35, SNX1 and SNX2. Interacts directly with VPS26A and VPS26B. Found in a complex with XPO7, EIF4A1, ARHGAP1, VPS26A, VPS29, VPS35 and SFN.,tissue specificity:Ubiquitous. Highly expressed in heart, brain, placenta, skeletal muscle, spleen, thymus, testis, ovary, small intestine, kidney and colon.,

## Research Area

## Image Data



Western Blot analysis of HeLa cells using VPS35 Polyclonal Antibody diluted at 1:500. Secondary antibody was diluted at 1:20000

## Note

For research use only.