

Summary

Production Name	VHX Rabbit Polyclonal Antibody
Description	Rabbit Polyclonal Antibody
Host	Rabbit
Application	WB
Reactivity	Human,Mouse

Performance

Conjugation	Unconjugated
Modification	Unmodified
Isotype	IgG
Clonality	Polyclonal
Form	Liquid
Storage	Store at 4°C short term. Aliquot and store at -20°C long term. Avoid freeze/thaw cycles.
Buffer	Liquid in PBS containing 50% glycerol, 0.5% BSA and 0.02% New type preservative N.
Purification	Affinity purification

Immunogen

Gene Name	DUSP22
Alternative Names	DUSP22; JSP1; LMWDSP2; MKPX; Dual specificity protein phosphatase 22; JNK-stimulatory phosphatase-1; JSP-1; Low molecular weight dual specificity phosphatase 2; LMW-DSP2; Mitogen-activated protein kinase phosphatase x; MAP kinase phosphatas
Gene ID	56940.0
SwissProt ID	Q9NRW4.The antiserum was produced against synthesized peptide derived from human DUSP22. AA range:121-170

Application

Dilution Ratio	WB 1:500-1:2000. ELISA: 1:10000.
Molecular Weight	21kD

Product Name: VHX Rabbit Polyclonal Antibody
Catalog #: APRab19792

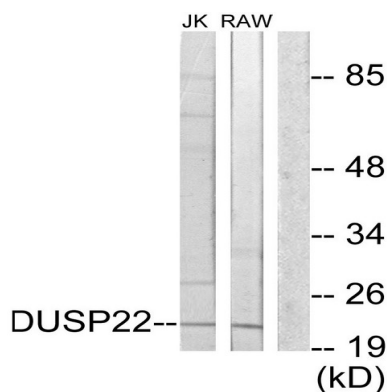


Background

catalytic activity:A phosphoprotein + H(2)O = a protein + phosphate.,catalytic activity:Protein tyrosine phosphate + H(2)O = protein tyrosine + phosphate.,function:Activates the Jnk signaling pathway. Dephosphorylates and deactivates p38 and stress-activated protein kinase/c-Jun N-terminal kinase (SAPK/JNK).,similarity:Belongs to the protein-tyrosine phosphatase family. Non-receptor class dual specificity subfamily.,similarity:Contains 1 tyrosine-protein phosphatase domain.,tissue specificity:Ubiquitous. Highest expression seen in heart, placenta, lung, liver, kidney and pancreas.,catalytic activity:A phosphoprotein + H(2)O = a protein + phosphate.,catalytic activity:Protein tyrosine phosphate + H(2)O = protein tyrosine + phosphate.,function:Activates the Jnk signaling pathway. Dephosphorylates and deactivates p38 and stress-activated protein kinase/c-Jun N-terminal kinase (SAPK/JNK).,similarity:Belongs to the protein-tyrosine phosphatase family. Non-receptor class dual specificity subfamily.,similarity:Contains 1 tyrosine-protein phosphatase domain.,tissue specificity:Ubiquitous. Highest expression seen in heart, placenta, lung, liver, kidney and pancreas.,

Research Area

Image Data



Western blot analysis of lysates from RAW264.7 and Jurkat cells, using DUSP22 Antibody. The lane on the right is blocked with the synthesized peptide.

Note

For research use only.