

Summary

Production Name	VAMP-1/2/3 Rabbit Polyclonal Antibody
Description	Rabbit Polyclonal Antibody
Host	Rabbit
Application	IHC, WB, ELISA
Reactivity	Human, Mouse, Rat

Performance

Conjugation	Unconjugated
Modification	Unmodified
Isotype	IgG
Clonality	Polyclonal
Form	Liquid
Storage	Store at 4°C short term. Aliquot and store at -20°C long term. Avoid freeze/thaw cycles.
Buffer	Liquid in PBS containing 50% glycerol, 0.5% BSA and 0.02% New type preservative N.
Purification	Affinity purification

Immunogen

Gene Name	VAMP1/VAMP2/VAMP3
Alternative Names	VAMP1; SYB1; Vesicle-associated membrane protein 1; VAMP-1; Synaptobrevin-1; VAMP2; SYB2; Vesicle-associated membrane protein 2; VAMP-2; Synaptobrevin-2; VAMP3; SYB3; Vesicle-associated membrane protein 3; VAMP-3; Cellubrevin; CEB; Synaptob
Gene ID	6843/6844/9341
SwissProt ID	P23763/P63027/Q15836. The antiserum was produced against synthesized peptide derived from human VAMP-1/2/3. AA range: 21-70

Application

Dilution Ratio	WB 1:500-2000 IHC 1:100 - 1:300. ELISA: 1:10000.
Molecular Weight	13kD

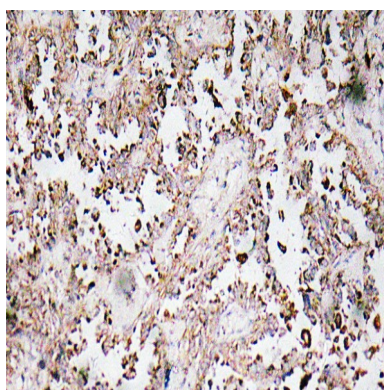
Background

Synaptobrevins, syntaxins, and the synaptosomal-associated protein SNAP25 are the main components of a protein complex involved in the docking and/or fusion of synaptic vesicles with the presynaptic membrane. The protein encoded by this gene is a member of the vesicle-associated membrane protein (VAMP)/synaptobrevin family. Mutations in this gene are associated with autosomal dominant spastic ataxia 1. Multiple alternative splice variants have been described, but the full-length nature of some variants has not been defined. [provided by RefSeq, Jul 2014],function:Involved in the targeting and/or fusion of transport vesicles to their target membrane.,similarity:Belongs to the synaptobrevin family.,similarity:Contains 1 v-SNARE coiled-coil homology domain.,subunit:Interacts with VAPA and VAPB.,tissue specificity:Nervous system, skeletal muscle and adipose tissue.,

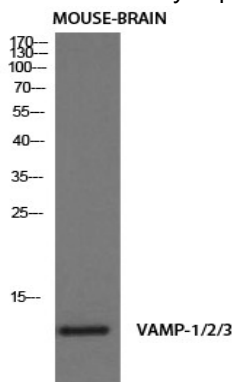
Research Area

SNARE interactions in vesicular transport;

Image Data

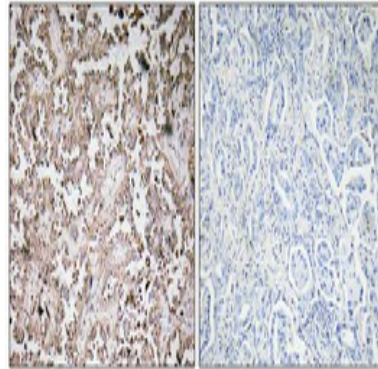


Immunohistochemistry analysis of VAMP-1/2/3 antibody in paraffin-embedded human lung carcinoma tissue.



Western Blot analysis of mouse-brain cells using VAMP-1/2/3 Polyclonal Antibody diluted at 1 : 1000. Secondary antibody was diluted at 1:20000

Product Name: VAMP-1/2/3 Rabbit Polyclonal Antibody
Catalog #: APRab19703



Immunohistochemical analysis of paraffin-embedded Human lung cancer. Antibody was diluted at 1:100 (4°,overnight) . High-pressure and temperature Tris-EDTA,pH8.0 was used for antigen retrieval. Negetive contrl (right) obtaned from antibody was pre-absorbed by immunogen peptide.

Note

For research use only.