

Product Name: UTRO Rabbit Polyclonal Antibody
Catalog #: APRab19695



Summary

Production Name	UTRO Rabbit Polyclonal Antibody
Description	Rabbit Polyclonal Antibody
Host	Rabbit
Application	WB,ELISA
Reactivity	Human,Rat,Mouse

Performance

Conjugation	Unconjugated
Modification	Unmodified
Isotype	IgG
Clonality	Polyclonal
Form	Liquid
Storage	Store at 4°C short term. Aliquot and store at -20°C long term. Avoid freeze/thaw cycles.
Buffer	Liquid in PBS containing 50% glycerol, and 0.02% New type preservative N.
Purification	Affinity purification

Immunogen

Gene Name	UTRN DMDL DRP1
Alternative Names	
Gene ID	7402.0
SwissProt ID	P46939.Synthesized peptide derived from part region of human protein

Application

Dilution Ratio	IHC 1:50-300
Molecular Weight	377kD

Background

This gene shares both structural and functional similarities with the dystrophin gene. It contains an actin-binding N-terminus, a triple coiled-coil repeat central region, and a C-terminus that consists of protein-protein interaction motifs

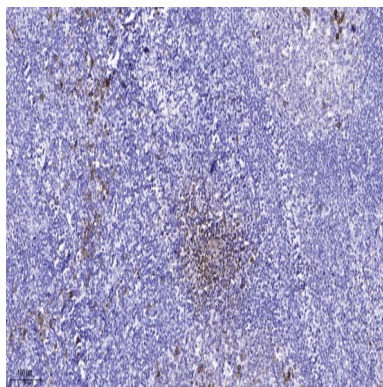
Product Name: UTRO Rabbit Polyclonal Antibody
Catalog #: APRab19695



which interact with dystroglycan protein components. The protein encoded by this gene is located at the neuromuscular synapse and myotendinous junctions, where it participates in post-synaptic membrane maintenance and acetylcholine receptor clustering. Mouse studies suggest that this gene may serve as a functional substitute for the dystrophin gene and therefore, may serve as a potential therapeutic alternative to muscular dystrophy which is caused by mutations in the dystrophin gene. Alternative splicing of the utrophin gene has been described; however, the full-length nature of these variants has not yet been determined. [provided by RefSeq, Jul 2008],function:May play a role in anchoring the cytoskeleton to the plasma membrane.,online information:Utrophin entry,similarity:Contains 1 WW domain.,similarity:Contains 1 ZZ-type zinc finger.,similarity:Contains 2 CH (calponin-homology) domains.,similarity:Contains 20 spectrin repeats.,subcellular location:Neuromuscular junction.,subunit:Interacts with the syntrophins SNTA1; SNTB1 and SNTB2. Interacts with SYNM.,tissue specificity:Muscle.,

Research Area

Image Data



Immunohistochemical analysis of paraffin-embedded human tonsil. 1, Antibody was diluted at 1:200 (4° overnight) . 2, Tris-EDTA,pH9.0 was used for antigen retrieval. 3,Secondary antibody was diluted at 1:200 (room temperature, 45min) .

Note

For research use only.