

## Summary

<b>Production Name</b>	USP36 Rabbit Polyclonal Antibody
<b>Description</b>	Rabbit Polyclonal Antibody
<b>Host</b>	Rabbit
<b>Application</b>	IHC,ELISA
<b>Reactivity</b>	Human,Rat,Mouse

## Performance

<b>Conjugation</b>	Unconjugated
<b>Modification</b>	Unmodified
<b>Isotype</b>	IgG
<b>Clonality</b>	Polyclonal
<b>Form</b>	Liquid
<b>Storage</b>	Store at 4°C short term. Aliquot and store at -20°C long term. Avoid freeze/thaw cycles.
<b>Buffer</b>	Liquid in PBS containing 50% glycerol, 0.5% BSA and 0.02% New type preservative N.
<b>Purification</b>	Affinity purification

## Immunogen

<b>Gene Name</b>	USP36
<b>Alternative Names</b>	USP36; KIAA1453; Ubiquitin carboxyl-terminal hydrolase 36; Deubiquitinating enzyme 36; Ubiquitin thioesterase 36; Ubiquitin-specific-processing protease 36
<b>Gene ID</b>	57602.0
<b>SwissProt ID</b>	Q9P275.The antiserum was produced against synthesized peptide derived from human USP36. AA range:501-550

## Application

<b>Dilution Ratio</b>	IHC 1:100-1:300 ELISA: 1:40000
<b>Molecular Weight</b>	125kD

## Background

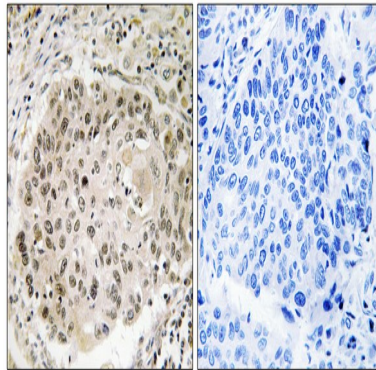
**Product Name: USP36 Rabbit Polyclonal Antibody**  
**Catalog #: APRab19677**



This gene encodes a member of the peptidase C19 or ubiquitin-specific protease family of cysteine proteases. Members of this family remove ubiquitin molecules from polyubiquitinated proteins. The encoded protein may deubiquitinate and stabilize the transcription factor c-Myc, also known as MYC, an important oncoprotein known to be upregulated in most human cancers. The encoded protease may also regulate the activation of autophagy. This gene exhibits elevated expression in some breast and lung cancers. [provided by RefSeq, Mar 2016],catalytic activity:Ubiquitin C-terminal thioester + H(2)O = ubiquitin + a thiol.,similarity:Belongs to the peptidase C19 family.,tissue specificity:Broadly expressed.,

## Research Area

## Image Data



Immunohistochemistry analysis of paraffin-embedded human lung carcinoma, using USP36 Antibody. The picture on the right is blocked with the synthesized peptide.

## Note

For research use only.