
Summary

Production Name	USP30 Rabbit Polyclonal Antibody
Description	Rabbit Polyclonal Antibody
Host	Rabbit
Application	WB,ELISA
Reactivity	Human,Mouse,Rat

Performance

Conjugation	Unconjugated
Modification	Unmodified
Isotype	IgG
Clonality	Polyclonal
Form	Liquid
Storage	Store at 4°C short term. Aliquot and store at -20°C long term. Avoid freeze/thaw cycles.
Buffer	Liquid in PBS containing 50% glycerol, 0.5% BSA and 0.02% New type preservative N.
Purification	Affinity purification

Immunogen

Gene Name	USP30 USP30; Ubiquitin carboxyl-terminal hydrolase 30; Deubiquitinating enzyme 30;
Alternative Names	Ubiquitin thioesterase 30; Ubiquitin-specific-processing protease 30; Ub-specific protease 30
Gene ID	84749.0
SwissProt ID	Q70CQ3.The antiserum was produced against synthesized peptide derived from human USP30. AA range:31-80

Application

Dilution Ratio	WB 1:500 - 1:2000. ELISA: 1:10000
Molecular Weight	60kd,unspecial bands(65kd,105kd,130kd)in HeLa and HCT116 cell.

Product Name: USP30 Rabbit Polyclonal Antibody
Catalog #: APRab19673

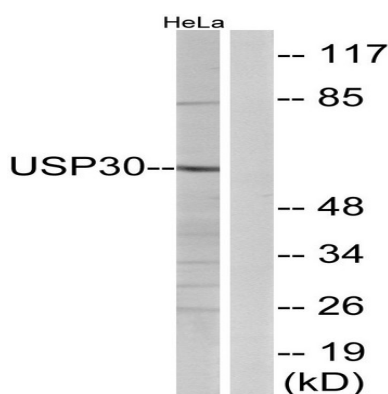


Background

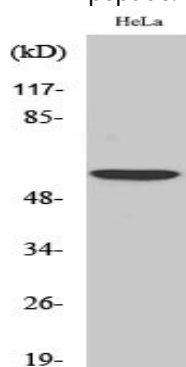
USP30, a member of the ubiquitin-specific protease family (see USP1, MIM 603478), is a novel mitochondrial deubiquitinating (DUB) enzyme (Nakamura and Hirose, 2008 [PubMed 18287522]). [supplied by OMIM, Dec 2008], catalytic activity: Ubiquitin C-terminal thioester + H₂O = ubiquitin + a thiol., function: May participate in the maintenance of mitochondrial morphology., similarity: Belongs to the peptidase C19 family., tissue specificity: Expressed in skeletal muscle, pancreas, liver and kidney.,

Research Area

Image Data



Western blot analysis of lysates from HeLa cells, using USP30 Antibody. The lane on the right is blocked with the synthesized peptide.



Western Blot analysis of various cells using USP30 Polyclonal Antibody. Secondary antibody was diluted at 1:20000

Note

For research use only.