

Summary

| | |
|------------------------|----------------------------------|
| Production Name | USP15 Rabbit Polyclonal Antibody |
| Description | Rabbit Polyclonal Antibody |
| Host | Rabbit |
| Application | WB |
| Reactivity | Human,Mouse,Rat |

Performance

| | |
|---------------------|--|
| Conjugation | Unconjugated |
| Modification | Unmodified |
| Isotype | IgG |
| Clonality | Polyclonal |
| Form | Liquid |
| Storage | Store at 4°C short term. Aliquot and store at -20°C long term. Avoid freeze/thaw cycles. |
| Buffer | Liquid in PBS containing 50% glycerol, 0.5% BSA and 0.02% New type preservative N. |
| Purification | Affinity purification |

Immunogen

| | |
|--------------------------|--|
| Gene Name | USP15 USP15; KIAA0529; Ubiquitin carboxyl-terminal hydrolase 15; Deubiquitinating enzyme |
| Alternative Names | 15; Ubiquitin thioesterase 15; Ubiquitin-specific-processing protease 15; Unph-2; Unph4 |
| Gene ID | 9958.0 |
| SwissProt ID | Q9Y4E8.The antiserum was produced against synthesized peptide derived from human USP15. AA range:81-130 |

Application

| | |
|-------------------------|----------------------------------|
| Dilution Ratio | WB 1:500-1:2000. ELISA: 1:10000. |
| Molecular Weight | 115kD |

Product Name: USP15 Rabbit Polyclonal Antibody
Catalog #: APRab19665

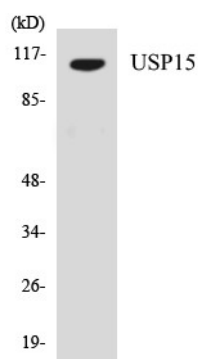


Background

This gene encodes a member of the ubiquitin specific protease (USP) family of deubiquitinating enzymes. USP enzymes play critical roles in ubiquitin-dependent processes through polyubiquitin chain disassembly and hydrolysis of ubiquitin-substrate bonds. The encoded protein associates with the COP9 signalosome, and also plays a role in transforming growth factor beta signalling through deubiquitination of receptor-activated SMAD transcription factors. Alternatively spliced transcript variants encoding multiple isoforms have been observed for this gene, and a pseudogene of this gene is located on the long arm of chromosome 2. [provided by RefSeq, Nov 2011],catalytic activity:Ubiquitin C-terminal thioester + H(2)O = ubiquitin + a thiol.,similarity:Belongs to the peptidase C19 family.,similarity:Contains 1 DUSP domain.,tissue specificity:Expressed in skeletal muscle, kidney, heart, placenta, liver, thymus, lung, and ovary, with little or no expression in other tissues.,

Research Area

Image Data



Western blot analysis of the lysates from HeLa cells using USP15 antibody.

Note

For research use only.