

Summary

| | |
|------------------------|---------------------------------|
| Production Name | ULK2 Rabbit Polyclonal Antibody |
| Description | Rabbit Polyclonal Antibody |
| Host | Rabbit |
| Application | WB |
| Reactivity | Human,Mouse,Rat |

Performance

| | |
|---------------------|--|
| Conjugation | Unconjugated |
| Modification | Unmodified |
| Isotype | IgG |
| Clonality | Polyclonal |
| Form | Liquid |
| Storage | Store at 4°C short term. Aliquot and store at -20°C long term. Avoid freeze/thaw cycles. |
| Buffer | Liquid in PBS containing 50% glycerol, 0.5% BSA and 0.02% New type preservative N. |
| Purification | Affinity purification |

Immunogen

| | |
|--------------------------|---|
| Gene Name | ULK2 KIAA0623 |
| Alternative Names | ULK2 KIAA0623 |
| Gene ID | 9706.0 |
| SwissProt ID | Q8IYT8.Synthetic peptide from human protein at AA range: 930-1000 |

Application

| | |
|-------------------------|------------------------------------|
| Dilution Ratio | WB 1:500-2000, ELISA 1:10000-20000 |
| Molecular Weight | 140kD |

Background

unc-51 like autophagy activating kinase 2(ULK2) Homo sapiens This gene encodes a protein that is similar to a serine/threonine kinase in C. elegans which is involved in axonal elongation. The structure of this protein is similar to the C.

Product Name: ULK2 Rabbit Polyclonal Antibody
Catalog #: APRab19622

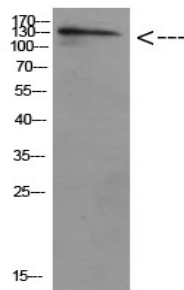


elegans protein in that both proteins have an N-terminal kinase domain, a central proline/serine rich (PS) domain, and a C-terminal (C) domain. The gene is located within the Smith-Magenis syndrome region on chromosome 17. Alternatively spliced transcript variants encoding the same protein have been identified. [provided by RefSeq, Dec 2008], catalytic activity: ATP + a protein = ADP + a phosphoprotein., PTM: Autophosphorylated., similarity: Belongs to the protein kinase superfamily. Ser/Thr protein kinase family. APG1/unc-51/ULK1 subfamily., similarity: Contains 1 protein kinase domain.,

Research Area

Regulation of autophagy; mTOR;

Image Data



Western Blot analysis of HELA cells using Antibody diluted at 500. Secondary antibody was diluted at 1:20000

Note

For research use only.