

## Summary

<b>Production Name</b>	UBE2G1 Rabbit Polyclonal Antibody
<b>Description</b>	Rabbit Polyclonal Antibody
<b>Host</b>	Rabbit
<b>Application</b>	IHC,ELISA
<b>Reactivity</b>	Human,Mouse,Rat

## Performance

<b>Conjugation</b>	Unconjugated
<b>Modification</b>	Unmodified
<b>Isotype</b>	IgG
<b>Clonality</b>	Polyclonal
<b>Form</b>	Liquid
<b>Storage</b>	Store at 4°C short term. Aliquot and store at -20°C long term. Avoid freeze/thaw cycles.
<b>Buffer</b>	Liquid in PBS containing 50% glycerol, 0.5% BSA and 0.02% New type preservative N.
<b>Purification</b>	Affinity purification

## Immunogen

<b>Gene Name</b>	UBE2G1
<b>Alternative Names</b>	UBE2G1; UBE2G; Ubiquitin-conjugating enzyme E2 G1; E217K; UBC7; Ubiquitin carrier protein G1; Ubiquitin-protein ligase G1
<b>Gene ID</b>	7326.0
<b>SwissProt ID</b>	P62253.Synthesized peptide derived from the Internal region of human UBE2G1.

## Application

<b>Dilution Ratio</b>	IHC 1:100-1:300 ELISA: 1:40000
<b>Molecular Weight</b>	

## Background

The modification of proteins with ubiquitin is an important cellular mechanism for targeting abnormal or short-lived

**Product Name: UBE2G1 Rabbit Polyclonal Antibody**  
**Catalog #: APRab19521**

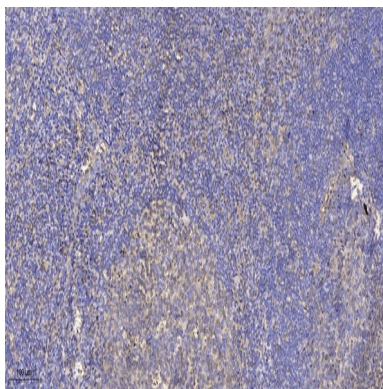


proteins for degradation. Ubiquitination involves at least three classes of enzymes: ubiquitin-activating enzymes, or E1s, ubiquitin-conjugating enzymes, or E2s, and ubiquitin-protein ligases, or E3s. This gene encodes a member of the E2 ubiquitin-conjugating enzyme family and catalyzes the covalent attachment of ubiquitin to other proteins. The protein may be involved in degradation of muscle-specific proteins. [provided by RefSeq, Jul 2008],catalytic activity:ATP + ubiquitin + protein lysine = AMP + diphosphate + protein N-ubiquityllysine.,function:Catalyzes the covalent attachment of ubiquitin to other proteins. May be involved in degradation of muscle-specific proteins.,pathway:Protein modification; protein ubiquitination.,similarity:Belongs to the ubiquitin-conjugating enzyme family.,tissue specificity:Widely expressed, mainly in skeletal muscle.,

## Research Area

Ubiquitin mediated proteolysis;Parkinson's disease;

## Image Data



Immunohistochemical analysis of paraffin-embedded human tonsil. 1, Antibody was diluted at 1:200 (4° overnight) . 2, Tris-EDTA,pH9.0 was used for antigen retrieval. 3,Secondary antibody was diluted at 1:200 (room temperature, 30min) .

## Note

For research use only.