

Summary

Production Name	UBE2D2 Rabbit Polyclonal Antibody
Description	Rabbit Polyclonal Antibody
Host	Rabbit
Application	WB,ELISA
Reactivity	Human,Mouse,Rat

Performance

Conjugation	Unconjugated
Modification	Unmodified
Isotype	IgG
Clonality	Polyclonal
Form	Liquid
Storage	Store at 4°C short term. Aliquot and store at -20°C long term. Avoid freeze/thaw cycles.
Buffer	Liquid in PBS containing 50% glycerol, 0.5% BSA and 0.02% New type preservative N.
Purification	Affinity purification

Immunogen

Gene Name	UBE2D2 UBE2D2; UBC4; UBC5B; UBCH4; UBCH5B; Ubiquitin-conjugating enzyme E2 D2;
Alternative Names	Ubiquitin carrier protein D2; Ubiquitin-conjugating enzyme E2(17)KB 2; Ubiquitin-conjugating enzyme E2-17 kDa 2; Ubiquitin-protein ligase D2
Gene ID	7322.0
SwissProt ID	P62837.The antiserum was produced against synthesized peptide derived from human UBE2D2. AA range:98-147

Application

Dilution Ratio	WB 1:500 - 1:2000. ELISA: 1:10000
Molecular Weight	17kD

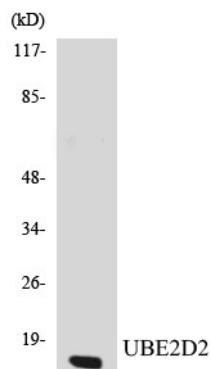
Background

Regulated degradation of misfolded, damaged or short-lived proteins in eukaryotes occurs via the ubiquitin (Ub)-proteasome system (UPS). An integral part of the UPS system is the ubiquitination of target proteins and covalent linkage of Ub-containing proteins to form polymeric chains, marking them as targets for 26S proteasome-mediated degradation. Ubiquitination of proteins is mediated by a cascade of enzymes which includes E1 (ubiquitin activating), E2 (ubiquitin conjugating), and E3 (ubiquitin ligases) enzymes. This gene encodes a member of the E2 enzyme family. Substrates of this enzyme include the tumor suppressor protein p53 and peroxisomal biogenesis factor 5 (PEX5). Alternative splicing results in multiple transcript variants of this gene. [provided by RefSeq, May 2013],catalytic activity:ATP + ubiquitin + protein lysine = AMP + diphosphate + protein N-ubiquityllysine.,function:Catalyzes the covalent attachment of ubiquitin to other proteins. Mediates the selective degradation of short-lived and abnormal proteins. Functions in the E6/E6-AP-induced ubiquitination of p53/TP53.,pathway:Protein modification; protein ubiquitination.,similarity:Belongs to the ubiquitin-conjugating enzyme family.,subunit:Interacts with SCF (SKP1-CUL1-F-box protein) E3 ubiquitin ligase complex and with E3 ubiquitin-protein ligase PJA2.,

Research Area

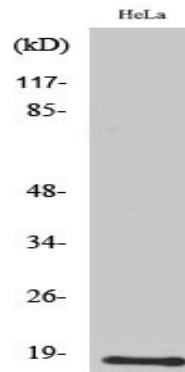
Ubiquitin mediated proteolysis;

Image Data



Western blot analysis of the lysates from K562 cells using UBE2D2 antibody.

Product Name: UBE2D2 Rabbit Polyclonal Antibody
Catalog #: APRab19520



Western Blot analysis of various cells using UBE2D2 Polyclonal Antibody diluted at 1: 2000. Secondary antibody was diluted at 1:20000

Note

For research use only.