

Product Name: TWIK-1 Rabbit Polyclonal Antibody
Catalog #: APRab19444



Summary

Production Name	TWIK-1 Rabbit Polyclonal Antibody
Description	Rabbit Polyclonal Antibody
Host	Rabbit
Application	WB
Reactivity	Human,Rat

Performance

Conjugation	Unconjugated
Modification	Unmodified
Isotype	IgG
Clonality	Polyclonal
Form	Liquid
Storage	Store at 4°C short term. Aliquot and store at -20°C long term. Avoid freeze/thaw cycles.
Buffer	Liquid in PBS containing 50% glycerol, 0.5% BSA and 0.02% New type preservative N.
Purification	Affinity purification

Immunogen

Gene Name	KCNK1
Alternative Names	KCNK1; HOHO1; KCNO1; TWIK1; Potassium channel subfamily K member 1; Inward rectifying potassium channel protein TWIK-1; Potassium channel KCNO1
Gene ID	3775.0
SwissProt ID	O00180.The antiserum was produced against synthesized peptide derived from human KCNK1. AA range:287-336

Application

Dilution Ratio	WB 1:500-1:2000. ELISA: 1:40000.
Molecular Weight	38kD

Background

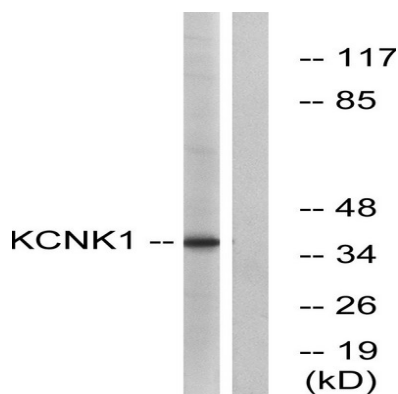
Product Name: TWIK-1 Rabbit Polyclonal Antibody
Catalog #: APRab19444



This gene encodes one of the members of the superfamily of potassium channel proteins containing two pore-forming P domains. The product of this gene has not been shown to be a functional channel, however, it may require other non-pore-forming proteins for activity. [provided by RefSeq, Jul 2008],function:Weakly inward rectifying potassium channel.,miscellaneous:Inhibited by barium, quinine, quinidine and internal acidification. Activated by protein kinase C.,similarity:Belongs to the two pore domain potassium channel (TC 1.A.1.8) family.,subunit:Homodimer .,tissue specificity:Widely expressed with high levels in heart and brain and lower levels in placenta, lung, liver and kidney.,

Research Area

Image Data



Western blot analysis of lysates from Jurkat cells, using KCNK1 Antibody. The lane on the right is blocked with the synthesized peptide.

Note

For research use only.