

Summary

Production Name	TUSC2 Rabbit Polyclonal Antibody
Description	Rabbit Polyclonal Antibody
Host	Rabbit
Application	WB,IHC,ELISA
Reactivity	Human,Mouse

Performance

Conjugation	Unconjugated
Modification	Unmodified
Isotype	IgG
Clonality	Polyclonal
Form	Liquid
Storage	Store at 4°C short term. Aliquot and store at -20°C long term. Avoid freeze/thaw cycles.
Buffer	Liquid in PBS containing 50% glycerol, 0.5% BSA and 0.02% New type preservative N.
Purification	Affinity purification

Immunogen

Gene Name	TUSC2
Alternative Names	TUSC2; C3orf11; FUS1; LGCC; PDAP2; Tumor suppressor candidate 2; Fusion 1 protein; Fus-1 protein; PDGFA-associated protein 2
Gene ID	11334.0
SwissProt ID	O75896.The antiserum was produced against synthesized peptide derived from human TUSC2. AA range:41-90

Application

Dilution Ratio	WB 1:500 - 1:2000. IHC 1:100 - 1:300. ELISA: 1:5000..
Molecular Weight	12kD

Product Name: TUSC2 Rabbit Polyclonal Antibody
Catalog #: APRab19435

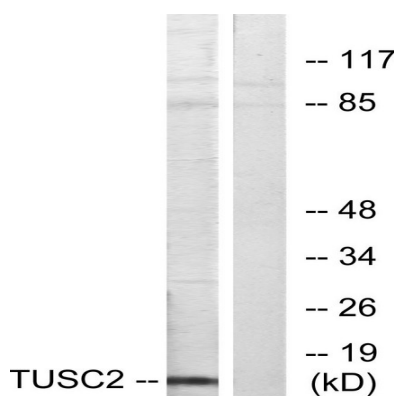


Background

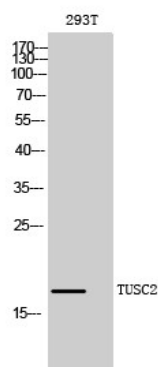
This gene is a highly conserved lung cancer candidate gene. No other information about this gene is currently available. [provided by RefSeq, Jul 2008],function:May function as a tumor suppressor, inhibiting colony formation, causing G1 arrest and ultimately inducing apoptosis in homozygous 3p21.3 120-kb region-deficient cells.,PTM:Myristoylation is required for tumor suppressor activity.,similarity:Belongs to the TUSC2 family.,tissue specificity:Strong expression in heart, lung, skeletal muscle, kidney, and pancreas, followed by brain and liver, lowest levels in placenta.,

Research Area

Image Data

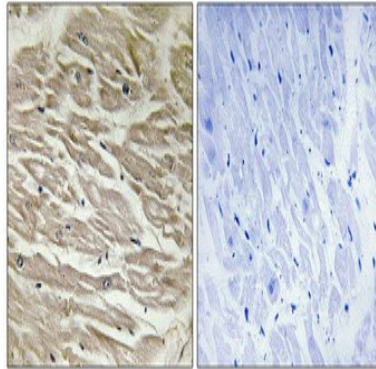


Western blot analysis of lysates from HeLa cells, using TUSC2 Antibody. The lane on the right is blocked with the synthesized peptide.



Western Blot analysis of 293T cells using TUSC2 Polyclonal Antibody diluted at 1 : 1000. Secondary antibody was diluted at 1:20000

Product Name: TUSC2 Rabbit Polyclonal Antibody
Catalog #: APRab19435



Immunohistochemical analysis of paraffin-embedded Human heart. Antibody was diluted at 1:100 (4°, overnight) . High-pressure and temperature Tris-EDTA, pH 8.0 was used for antigen retrieval. Negative control (right) obtained from antibody was pre-absorbed by immunogen peptide.

Note

For research use only.