

Summary

Production Name	TULA Rabbit Polyclonal Antibody
Description	Rabbit Polyclonal Antibody
Host	Rabbit
Application	WB
Reactivity	Human,Rat,Mouse

Performance

Conjugation	Unconjugated
Modification	Unmodified
Isotype	IgG
Clonality	Polyclonal
Form	Liquid
Storage	Store at 4°C short term. Aliquot and store at -20°C long term. Avoid freeze/thaw cycles.
Buffer	Liquid in PBS containing 50% glycerol, 0.5% BSA and 0.02% New type preservative N.
Purification	Affinity purification

Immunogen

Gene Name	UBASH3A UBASH3A; STS2; Ubiquitin-associated and SH3 domain-containing protein A; Cbl-
Alternative Names	interacting protein 4; CLIP4; Suppressor of T-cell receptor signaling 2; STS-2; T-cell ubiquitin ligand 1; TULA-1
Gene ID	53347.0
SwissProt ID	P57075.The antiserum was produced against synthesized peptide derived from human UBASH3A. AA range:311-360

Application

Dilution Ratio	WB 1:500-1:2000. ELISA: 1:5000.
Molecular Weight	75kD

Product Name: TULA Rabbit Polyclonal Antibody
Catalog #: APRab19430

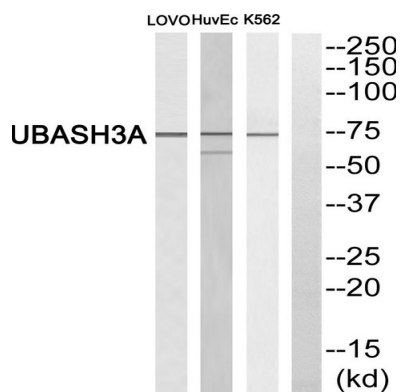


Background

This gene encodes one of two family members belonging to the T-cell ubiquitin ligand (TULA) family. Both family members can negatively regulate T-cell signaling. This family member can facilitate growth factor withdrawal-induced apoptosis in T cells, which may occur via its interaction with AIF, an apoptosis-inducing factor. Alternative splicing of this gene results in multiple transcript variants. [provided by RefSeq, Aug 2011],function:Interferes with CBL-mediated down-regulation and degradation of receptor-type tyrosine kinases. Promotes accumulation of activated target receptors, such as T-cell receptors, EGFR and PDGFRB, on the cell surface.,similarity:Contains 1 SH3 domain.,similarity:Contains 1 UBA domain.,subunit:Homodimer or homooligomer. Interacts with CBL. Part of a complex containing CBL and activated EGFR. Interacts with ubiquitin and with mono-ubiquitinated proteins.,tissue specificity:Highest expression of UBASH3A in tissues belonging to the immune system, including spleen, peripheral blood leukocytes, thymus and bone marrow.,

Research Area

Image Data



Western blot analysis of UBASH3A Antibody. The lane on the right is blocked with the UBASH3A peptide.

Note

For research use only.