

## Summary

<b>Production Name</b>	TSHZ2 Rabbit Polyclonal Antibody
<b>Description</b>	Rabbit Polyclonal Antibody
<b>Host</b>	Rabbit
<b>Application</b>	IHC,IF,ELISA
<b>Reactivity</b>	Human,Mouse

## Performance

<b>Conjugation</b>	Unconjugated
<b>Modification</b>	Unmodified
<b>Isotype</b>	IgG
<b>Clonality</b>	Polyclonal
<b>Form</b>	Liquid
<b>Storage</b>	Store at 4°C short term. Aliquot and store at -20°C long term. Avoid freeze/thaw cycles.
<b>Buffer</b>	Liquid in PBS containing 50% glycerol, 0.5% BSA and 0.02% New type preservative N.
<b>Purification</b>	Affinity purification

## Immunogen

<b>Gene Name</b>	TSHZ2
<b>Alternative Names</b>	TSHZ2; C20orf17; TSH2; ZNF218; Teashirt homolog 2; Ovarian cancer-related protein 10-2; OVC10-2; Zinc finger protein 218
<b>Gene ID</b>	128553.0
<b>SwissProt ID</b>	Q9NRE2.The antiserum was produced against synthesized peptide derived from human TSH2. AA range:811-860

## Application

<b>Dilution Ratio</b>	IHC 1:100 - 1:300. IF 1:200 - 1:1000. ELISA: 1:20000. Not yet tested in other applications.
<b>Molecular Weight</b>	

**Product Name: TSHZ2 Rabbit Polyclonal Antibody**  
**Catalog #: APRab19366**

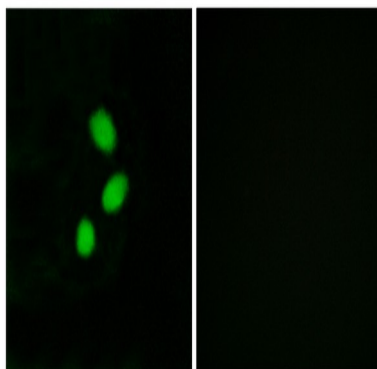


## Background

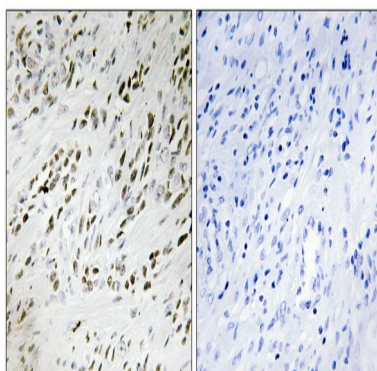
function:Transcriptional regulator involved in developmental processes .,PTM:Sumoylated.,sequence caution:The sequence differs from that shown due translation of a 3'-UTR region.,similarity:Belongs to the teashirt C2H2-type zinc-finger protein family.,similarity:Contains 1 homeobox DNA-binding domain.,similarity:Contains 5 C2H2-type zinc fingers.,function:Transcriptional regulator involved in developmental processes .,PTM:Sumoylated.,sequence caution:The sequence differs from that shown due translation of a 3'-UTR region.,similarity:Belongs to the teashirt C2H2-type zinc-finger protein family.,similarity:Contains 1 homeobox DNA-binding domain.,similarity:Contains 5 C2H2-type zinc fingers.,

## Research Area

## Image Data



Immunofluorescence analysis of MCF7 cells, using TSH2 Antibody. The picture on the right is blocked with the synthesized peptide.



Immunohistochemistry analysis of paraffin-embedded human prostate carcinoma tissue, using TSH2 Antibody. The picture on the right is blocked with the synthesized peptide.

## Note

For research use only.

**Product Name: TSHZ2 Rabbit Polyclonal Antibody**  
**Catalog #: APRab19366**

---

