

## Summary

<b>Production Name</b>	TSHZ1 Rabbit Polyclonal Antibody
<b>Description</b>	Rabbit Polyclonal Antibody
<b>Host</b>	Rabbit
<b>Application</b>	IHC,ELISA
<b>Reactivity</b>	Human,Mouse

## Performance

<b>Conjugation</b>	Unconjugated
<b>Modification</b>	Unmodified
<b>Isotype</b>	IgG
<b>Clonality</b>	Polyclonal
<b>Form</b>	Liquid
<b>Storage</b>	Store at 4°C short term. Aliquot and store at -20°C long term. Avoid freeze/thaw cycles.
<b>Buffer</b>	Liquid in PBS containing 50% glycerol, 0.5% BSA and 0.02% New type preservative N.
<b>Purification</b>	Affinity purification

## Immunogen

<b>Gene Name</b>	TSHZ1
<b>Alternative Names</b>	TSHZ1; SDCCAG33; TSH1; Teashirt homolog 1; Antigen NY-CO-33; Serologically defined colon cancer antigen 33
<b>Gene ID</b>	10194.0
<b>SwissProt ID</b>	Q6ZSZ6.The antiserum was produced against synthesized peptide derived from human TSH1. AA range:851-900

## Application

<b>Dilution Ratio</b>	IHC 1:100-1:300 ELISA: 1:20000
<b>Molecular Weight</b>	

## Background

**Product Name: TSHZ1 Rabbit Polyclonal Antibody**  
**Catalog #: APRab19365**

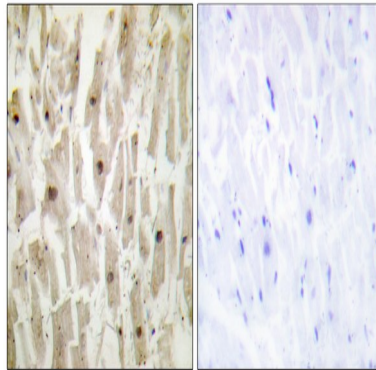


---

This gene encodes a colon cancer antigen that was defined by serological analysis of recombinant cDNA expression libraries. The encoded protein is a member of the teashirt C2H2-type zinc-finger protein family and may be involved in transcriptional regulation of developmental processes. Mutations in this gene may be associated with congenital aural atresia syndrome. [provided by RefSeq, Jan 2012],function:Transcriptional regulator involved in developmental processes .,similarity:Belongs to the teashirt C2H2-type zinc-finger protein family.,similarity:Contains 1 homeobox DNA-binding domain.,similarity:Contains 5 C2H2-type zinc fingers.,

## Research Area

## Image Data



Immunohistochemistry analysis of paraffin-embedded human heart tissue, using TSH1 Antibody. The picture on the right is blocked with the synthesized peptide.

## Note

For research use only.