

Summary

| | |
|------------------------|----------------------------------|
| Production Name | TSG-6 Rabbit Polyclonal Antibody |
| Description | Rabbit Polyclonal Antibody |
| Host | Rabbit |
| Application | WB |
| Reactivity | Human,Mouse |

Performance

| | |
|---------------------|--|
| Conjugation | Unconjugated |
| Modification | Unmodified |
| Isotype | IgG |
| Clonality | Polyclonal |
| Form | Liquid |
| Storage | Store at 4°C short term. Aliquot and store at -20°C long term. Avoid freeze/thaw cycles. |
| Buffer | Liquid in PBS containing 50% glycerol, 0.5% BSA and 0.02% New type preservative N. |
| Purification | Affinity purification |

Immunogen

| | |
|--------------------------|--|
| Gene Name | TNFAIP6 |
| Alternative Names | TNFAIP6; TSG6; Tumor necrosis factor-inducible gene 6 protein; Hyaluronate-binding protein; TNF-stimulated gene 6 protein; TSG-6; Tumor necrosis factor alpha-induced protein 6; TNF alpha-induced protein 6 |
| Gene ID | 7130.0 |
| SwissProt ID | P98066.The antiserum was produced against synthesized peptide derived from human TSG6. AA range:21-70 |

Application

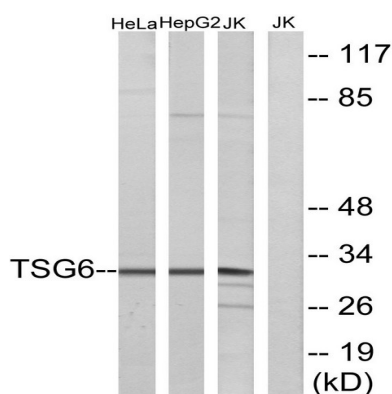
| | |
|-------------------------|---------------------------------|
| Dilution Ratio | WB 1:500-1:2000. ELISA: 1:5000. |
| Molecular Weight | 31kD |

Background

The protein encoded by this gene is a secretory protein that contains a hyaluronan-binding domain, and thus is a member of the hyaluronan-binding protein family. The hyaluronan-binding domain is known to be involved in extracellular matrix stability and cell migration. This protein has been shown to form a stable complex with inter-alpha-inhibitor (I alpha I), and thus enhance the serine protease inhibitory activity of I alpha I, which is important in the protease network associated with inflammation. This gene can be induced by proinflammatory cytokines such as tumor necrosis factor alpha and interleukin-1. Enhanced levels of this protein are found in the synovial fluid of patients with osteoarthritis and rheumatoid arthritis. [provided by RefSeq, Dec 2010],function:Possibly involved in cell-cell and cell-matrix interactions during inflammation and tumorigenesis.,induction:By TNF.,similarity:Contains 1 CUB domain.,similarity:Contains 1 Link domain.,subunit:Interacts with inter-alpha-inhibitor (I-alpha-I). Chondroitin sulfate may be required for the stability of the complex.,tissue specificity:Found in the synovial fluid of patients with rheumatoid arthritis.,

Research Area

Image Data



Western blot analysis of lysates from Jurkat, HeLa, and HepG2 cells, using TSG6 Antibody. The lane on the right is blocked with the synthesized peptide.

Note

For research use only.