

## Summary

<b>Production Name</b>	TRPC3 Rabbit Polyclonal Antibody
<b>Description</b>	Rabbit Polyclonal Antibody
<b>Host</b>	Rabbit
<b>Application</b>	WB,IHC,ELISA
<b>Reactivity</b>	Human,Mouse,Rat

## Performance

<b>Conjugation</b>	Unconjugated
<b>Modification</b>	Unmodified
<b>Isotype</b>	IgG
<b>Clonality</b>	Polyclonal
<b>Form</b>	Liquid
<b>Storage</b>	Store at 4°C short term. Aliquot and store at -20°C long term. Avoid freeze/thaw cycles.
<b>Buffer</b>	Liquid in PBS containing 50% glycerol, 0.5% BSA and 0.02% New type preservative N.
<b>Purification</b>	Affinity purification

## Immunogen

<b>Gene Name</b>	TRPC3
<b>Alternative Names</b>	TRPC3; TRP3; Short transient receptor potential channel 3; TrpC3; Transient receptor protein 3; TRP-3; hTrp-3; hTrp3
<b>Gene ID</b>	7222.0
<b>SwissProt ID</b>	Q13507.The antiserum was produced against synthesized peptide derived from the Internal region of human TRPC3. AA range:411-460

## Application

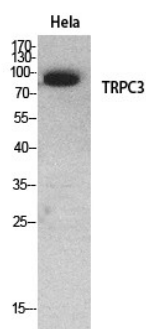
<b>Dilution Ratio</b>	WB 1:500 - 1:2000. IHC: 1:100-1:300. ELISA: 1:20000..
<b>Molecular Weight</b>	97kD

## Background

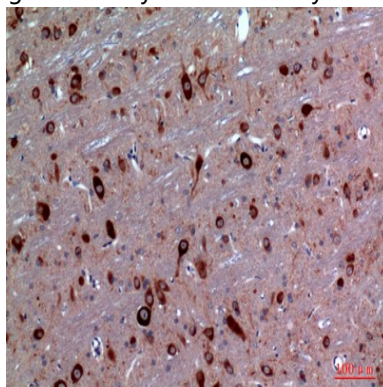
transient receptor potential cation channel subfamily C member 3 (TRPC3) Homo sapiens The protein encoded by this gene is a membrane protein that can form a non-selective channel permeable to calcium and other cations. The encoded protein appears to be induced to form channels by a receptor tyrosine kinase-activated phosphatidylinositol second messenger system and also by depletion of intracellular calcium stores. Two transcript variants encoding different isoforms have been found for this gene. [provided by RefSeq, Oct 2011],function:Thought to form a receptor-activated non-selective calcium permeant cation channel. Probably is operated by a phosphatidylinositol second messenger system activated by receptor tyrosine kinases or G-protein coupled receptors. Activated by diacylglycerol (DAG) in a membrane-delimited fashion, independently of protein kinase C, and by inositol-1,4,5-triphosphate receptors (ITPR) with bound IP3. May also be activated by internal calcium store depletion.,similarity:Belongs to the transient receptor family. STpC subfamily.,similarity:Contains 5 ANK repeats.,subunit:Interacts with TRPC1. Interacts with ITPR3. Interacts with MX1 and RNF24.,tissue specificity:Expressed predominantly in brain and at much lower levels in ovary, colon, small intestine, lung, prostate, placenta and testis.,

## Research Area

## Image Data



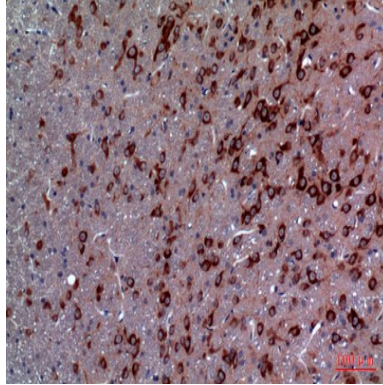
Western Blot analysis of HeLa cells using TRPC3 Polyclonal Antibody.. Secondary antibody was diluted at 1:20000



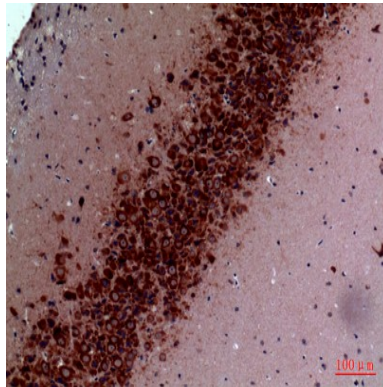
**Product Name: TRPC3 Rabbit Polyclonal Antibody**  
**Catalog #: APRab19314**



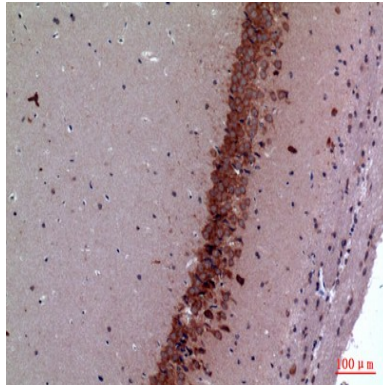
Immunohistochemical analysis of paraffin-embedded rat-brain, antibody was diluted at 1:100



Immunohistochemical analysis of paraffin-embedded rat-brain, antibody was diluted at 1:100



Immunohistochemical analysis of paraffin-embedded mouse-brain, antibody was diluted at 1:100



Immunohistochemical analysis of paraffin-embedded mouse-brain, antibody was diluted at 1:100

## **Note**

For research use only.