

Summary

Production Name	TRIP13 Rabbit Polyclonal Antibody
Description	Rabbit Polyclonal Antibody
Host	Rabbit
Application	WB
Reactivity	Human,Mouse,Rat

Performance

Conjugation	Unconjugated
Modification	Unmodified
Isotype	IgG
Clonality	Polyclonal
Form	Liquid
Storage	Store at 4°C short term. Aliquot and store at -20°C long term. Avoid freeze/thaw cycles.
Buffer	Liquid in PBS containing 50% glycerol, 0.5% BSA and 0.02% New type preservative N.
Purification	Affinity purification

Immunogen

Gene Name	TRIP13 TRIP13; PCH2; Pachytene checkpoint protein 2 homolog; Human papillomavirus type
Alternative Names	16 E1 protein-binding protein; 16E1-BP; HPV16 E1 protein-binding protein; Thyroid hormone receptor interactor 13; Thyroid receptor-interacting protein 13; TR-in
Gene ID	9319.0
SwissProt ID	Q15645.The antiserum was produced against synthesized peptide derived from human TRIP13. AA range:383-432

Application

Dilution Ratio	WB 1:500-1:2000. ELISA: 1:10000.
Molecular Weight	48kD

Product Name: TRIP13 Rabbit Polyclonal Antibody
Catalog #: APRab19278

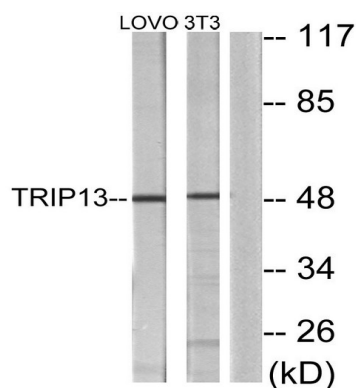


Background

This gene encodes a protein that interacts with thyroid hormone receptors, also known as hormone-dependent transcription factors. The gene product interacts specifically with the ligand binding domain. This gene is one of several that may play a role in early-stage non-small cell lung cancer. [provided by RefSeq, Oct 2009],similarity:Belongs to the AAA ATPase family.,subunit:Specifically interacts with the ligand binding domain of the thyroid receptor (TR). This interaction does not require the presence of thyroid hormone for its interaction. Interacts with HPV16 E1.,

Research Area

Image Data



Western blot analysis of lysates from LOVO and NIH/3T3 cells, using TRIP13 Antibody. The lane on the right is blocked with the synthesized peptide.

Note

For research use only.