

Product Name: TRIO Rabbit Polyclonal Antibody
Catalog #: APRab19277



Summary

Production Name	TRIO Rabbit Polyclonal Antibody
Description	Rabbit Polyclonal Antibody
Host	Rabbit
Application	WB,ELISA
Reactivity	Human,Mouse

Performance

Conjugation	Unconjugated
Modification	Unmodified
Isotype	IgG
Clonality	Polyclonal
Form	Liquid
Storage	Store at 4°C short term. Aliquot and store at -20°C long term. Avoid freeze/thaw cycles.
Buffer	Liquid in PBS containing 50% glycerol, and 0.02% New type preservative N.
Purification	Affinity purification

Immunogen

Gene Name	TRIO
Alternative Names	
Gene ID	7204.0
SwissProt ID	O75962.Synthesized peptide derived from part region of human protein

Application

Dilution Ratio	IHC 1:50-300
Molecular Weight	340kD

Background

This gene encodes a large protein that functions as a GDP to GTP exchange factor. This protein promotes the reorganization of the actin cytoskeleton, thereby playing a role in cell migration and growth. Alternative splicing results in

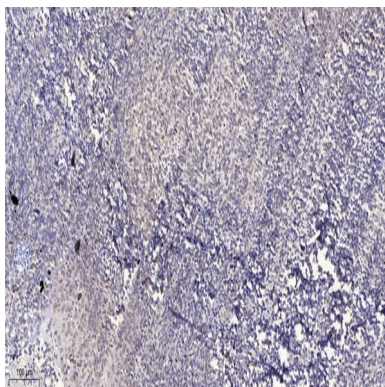
Product Name: TRIO Rabbit Polyclonal Antibody
Catalog #: APRab19277



multiple transcript variants. [provided by RefSeq, Dec 2015],catalytic activity:ATP + a protein = ADP + a phosphoprotein.,domain:The N-terminal DBL/GEF domain specifically catalyzes nucleotide exchange for RAC1, leading to the activation of Jun kinase and the production of membrane ruffles. The second DBL/GEF domain is an exchange factor for rhoa and induces the formation of stress fibers.,function:Promotes the exchange of GDP by GTP. Together with leukocyte antigen-related (LAR) protein, it could play a role in coordinating cell-matrix and cytoskeletal rearrangements necessary for cell migration and cell growth.,PTM:Phosphorylated on serine residue(s),similarity:Belongs to the protein kinase superfamily. CAMK Ser/Thr protein kinase family.,similarity:Contains 1 CRAL-TRIO domain.,similarity:Contains 1 Ig-like C2-type (immunoglobulin-like) domain.,similarity:Contains 1 protein kinase domain.,similarity:Contains 2 DH (DBL-homology) domains.,similarity:Contains 2 PH domains.,similarity:Contains 2 SH3 domains.,similarity:Contains 4 spectrin repeats.,subunit:Interacts to form a complex with leukocyte antigen related protein.,tissue specificity:Highly expressed in heart, skeletal muscle, brain, pancreas, placenta, liver, kidney and lung.,

Research Area

Image Data



Immunohistochemical analysis of paraffin-embedded human tonsil. 1, Antibody was diluted at 1:200 (4° overnight) . 2, Tris-EDTA,pH9.0 was used for antigen retrieval. 3,Secondary antibody was diluted at 1:200 (room temperature, 30min) .

Note

For research use only.