

---

## Summary

<b>Production Name</b>	TRH-R1 Rabbit Polyclonal Antibody
<b>Description</b>	Rabbit Polyclonal Antibody
<b>Host</b>	Rabbit
<b>Application</b>	IF, WB, ELISA
<b>Reactivity</b>	Human, Mouse, Rat, Monkey

## Performance

<b>Conjugation</b>	Unconjugated
<b>Modification</b>	Unmodified
<b>Isotype</b>	IgG
<b>Clonality</b>	Polyclonal
<b>Form</b>	Liquid
<b>Storage</b>	Store at 4°C short term. Aliquot and store at -20°C long term. Avoid freeze/thaw cycles.
<b>Buffer</b>	Liquid in PBS containing 50% glycerol, 0.5% BSA and 0.02% New type preservative N.
<b>Purification</b>	Affinity purification

## Immunogen

<b>Gene Name</b>	TRHR
<b>Alternative Names</b>	TRHR; Thyrotropin-releasing hormone receptor; TRH-R; Thyroliberin receptor
<b>Gene ID</b>	7201.0
<b>SwissProt ID</b>	P34981. The antiserum was produced against synthesized peptide derived from human TRHR. AA range: 195-244

## Application

<b>Dilution Ratio</b>	WB 1:500 - 1:2000. IF 1:200 - 1:1000. ELISA: 1:20000. Not yet tested in other applications.
<b>Molecular Weight</b>	50kD

**Product Name: TRH-R1 Rabbit Polyclonal Antibody**  
**Catalog #: APRab19243**



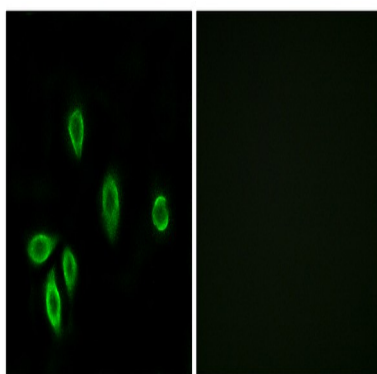
## Background

This gene encodes a G protein-coupled receptor for thyrotropin-releasing hormone (TRH). Upon binding to TRH, this receptor activates the inositol phospholipid-calcium-protein kinase C transduction pathway. Mutations in this gene have been associated with generalized thyrotropin-releasing hormone resistance. [provided by RefSeq, Sep 2011],function:Receptor for thyrotropin-releasing hormone. This receptor is mediated by G proteins which activate a phosphatidylinositol-calcium second messenger system.,similarity:Belongs to the G-protein coupled receptor 1 family.,

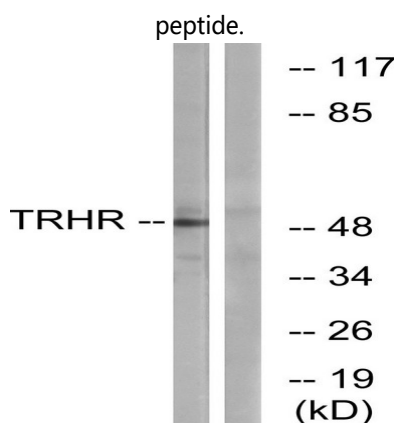
## Research Area

Calcium;Neuroactive ligand-receptor interaction;

## Image Data

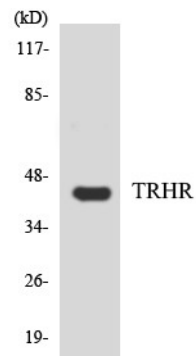


Immunofluorescence analysis of A549 cells, using TRHR Antibody. The picture on the right is blocked with the synthesized



Western blot analysis of lysates from COS7 cells, using TRHR Antibody. The lane on the right is blocked with the synthesized peptide.

**Product Name: TRH-R1 Rabbit Polyclonal Antibody**  
**Catalog #: APRab19243**



Western blot analysis of the lysates from HepG2 cells using TRHR antibody.

**Note**

For research use only.