
Summary

Production Name	TPH2 Rabbit Polyclonal Antibody
Description	Rabbit Polyclonal Antibody
Host	Rabbit
Application	WB,ELISA
Reactivity	Human,Mouse,Rat,Monkey

Performance

Conjugation	Unconjugated
Modification	Unmodified
Isotype	IgG
Clonality	Polyclonal
Form	Liquid
Storage	Store at 4°C short term. Aliquot and store at -20°C long term. Avoid freeze/thaw cycles.
Buffer	Liquid in PBS containing 50% glycerol, 0.5% BSA and 0.02% New type preservative N.
Purification	Affinity purification

Immunogen

Gene Name	TPH2
Alternative Names	TPH2; NTPH; Tryptophan 5-hydroxylase 2; Neuronal tryptophan hydroxylase; Tryptophan 5-monoxygenase 2
Gene ID	121278.0
SwissProt ID	Q8IWU9.The antiserum was produced against synthesized peptide derived from human TPH2. AA range:4-53

Application

Dilution Ratio	WB 1:500 - 1:2000. ELISA: 1:40000.
Molecular Weight	56kD

Product Name: TPH2 Rabbit Polyclonal Antibody
Catalog #: APRab19155



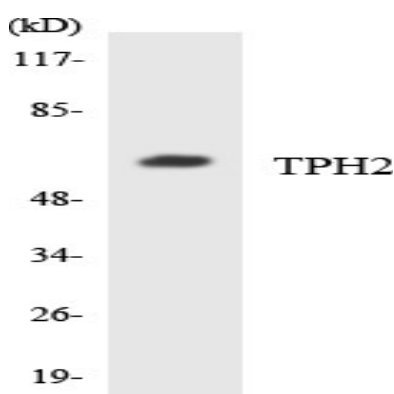
Background

This gene encodes a member of the pterin-dependent aromatic acid hydroxylase family. The encoded protein catalyzes the first and rate limiting step in the biosynthesis of serotonin, an important hormone and neurotransmitter. Mutations in this gene may be associated with psychiatric diseases such as bipolar affective disorder and major depression. [provided by RefSeq, Feb 2016],catalytic activity:L-tryptophan + tetrahydrobiopterin + O(2) = 5-hydroxy-L-tryptophan + 4a-hydroxytetrahydrobiopterin.,cofactor:Fe(2+) ion.,disease:Genetic variation in TPH2 may influence susceptibility to major depressive disorder (MDD) [MIM:608516],.pathway:Aromatic compound metabolism; serotonin biosynthesis; serotonin from L-tryptophan: step 1/2.,similarity:Belongs to the biopterin-dependent aromatic amino acid hydroxylase family.,similarity:Contains 1 ACT domain.,tissue specificity:Brain specific.,

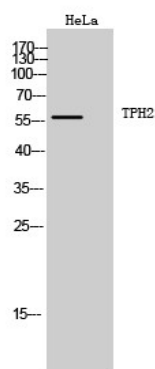
Research Area

Tryptophan metabolism;

Image Data



Western blot analysis of the lysates from HUVEC cells using TPH2 antibody.



Western Blot analysis of HeLa cells using TPH2 Polyclonal Antibody. Secondary antibody was diluted at 1:20000

Note

For research use only.

Product Name: TPH2 Rabbit Polyclonal Antibody
Catalog #: APRab19155

