

---

## Summary

<b>Production Name</b>	Topo III $\beta$ -1 Rabbit Polyclonal Antibody
<b>Description</b>	Rabbit Polyclonal Antibody
<b>Host</b>	Rabbit
<b>Application</b>	WB,ELISA
<b>Reactivity</b>	Human,Mouse

## Performance

<b>Conjugation</b>	Unconjugated
<b>Modification</b>	Unmodified
<b>Isotype</b>	IgG
<b>Clonality</b>	Polyclonal
<b>Form</b>	Liquid
<b>Storage</b>	Store at 4°C short term. Aliquot and store at -20°C long term. Avoid freeze/thaw cycles.
<b>Buffer</b>	Liquid in PBS containing 50% glycerol, 0.5% BSA and 0.02% New type preservative N.
<b>Purification</b>	Affinity purification

## Immunogen

<b>Gene Name</b>	TOP3B
<b>Alternative Names</b>	TOP3B; TOP3B1; DNA topoisomerase 3-beta-1; DNA topoisomerase III beta-1
<b>Gene ID</b>	8940.0
<b>SwissProt ID</b>	O95985.The antiserum was produced against synthesized peptide derived from human TOP3B. AA range:51-100

## Application

<b>Dilution Ratio</b>	WB 1:500 - 1:2000. ELISA: 1:20000
<b>Molecular Weight</b>	96kD

## Background

---

**Product Name: Topo III $\beta$ -1 Rabbit Polyclonal Antibody**  
**Catalog #: APRab19128**

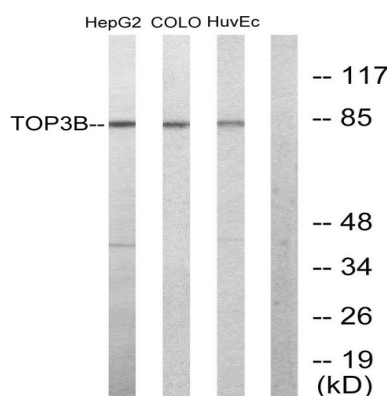


This gene encodes a DNA topoisomerase, an enzyme that controls and alters the topologic states of DNA during transcription. This enzyme catalyzes the transient breaking and rejoining of a single strand of DNA which allows the strands to pass through one another, thus relaxing the supercoils and altering the topology of DNA. The enzyme interacts with DNA helicase SGS1 and plays a role in DNA recombination, cellular aging and maintenance of genome stability. Low expression of this gene may be related to higher survival rates in breast cancer patients. This gene has a pseudogene on chromosome 22. Alternate splicing results in multiple transcript variants. Additional alternatively spliced transcript variants of this gene have been described, but their full-length nature is not known. [provided by RefSeq, Aug 2013],catalytic activity:ATP-independent breakage of single-stranded DNA, followed by passage and rejoining.,function:Possesses negatively supercoiled DNA relaxing activity.,similarity:Belongs to the prokaryotic type I/III topoisomerase family.,tissue specificity:Isoform 1 is found in testis, heart and skeletal muscle. A 4 kb transcript which probably represents isoform 2 is found in thymus, kidney and pancreas.,

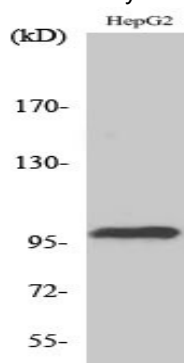
## Research Area

Homologous recombination;

## Image Data



Western blot analysis of lysates from HepG2, COLO205, and HUVEC cells, using TOP3B Antibody. The lane on the right is blocked with the synthesized peptide.



Western Blot analysis of various cells using Topo III $\beta$ -1 Polyclonal Antibody. Secondary antibody was diluted at 1:20000 cells

**Product Name: Topo III $\beta$ -1 Rabbit Polyclonal Antibody**  
**Catalog #: APRab19128**



---

nucleus extracted by Minute TM Cytoplasmic and Nuclear Fractionation kit (SC-003, Inventbiotech, MN, USA) .

**Note**

For research use only.