

## Summary

<b>Production Name</b>	Topo III $\alpha$ Rabbit Polyclonal Antibody
<b>Description</b>	Rabbit Polyclonal Antibody
<b>Host</b>	Rabbit
<b>Application</b>	WB
<b>Reactivity</b>	Human,Mouse

## Performance

<b>Conjugation</b>	Unconjugated
<b>Modification</b>	Unmodified
<b>Isotype</b>	IgG
<b>Clonality</b>	Polyclonal
<b>Form</b>	Liquid
<b>Storage</b>	Store at 4°C short term. Aliquot and store at -20°C long term. Avoid freeze/thaw cycles.
<b>Buffer</b>	Liquid in PBS containing 50% glycerol, 0.5% BSA and 0.02% New type preservative N.
<b>Purification</b>	Affinity purification

## Immunogen

<b>Gene Name</b>	TOP3A
<b>Alternative Names</b>	TOP3A; TOP3; DNA topoisomerase 3-alpha; DNA topoisomerase III alpha
<b>Gene ID</b>	7156.0
<b>SwissProt ID</b>	Q13472.Synthesized peptide derived from Topo III $\alpha$ . at AA range: 350-430

## Application

<b>Dilution Ratio</b>	WB 1:500-1:2000. ELISA: 1:10000.
<b>Molecular Weight</b>	115kD

## Background

This gene encodes a DNA topoisomerase, an enzyme that controls and alters the topologic states of DNA during transcription. This enzyme catalyzes the transient breaking and rejoining of a single strand of DNA which allows the strands

**Product Name: Topo III $\alpha$  Rabbit Polyclonal Antibody**  
**Catalog #: APRab19127**

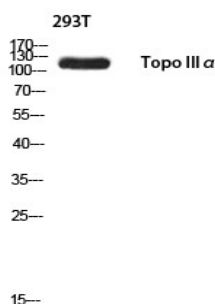


to pass through one another, thus reducing the number of supercoils and altering the topology of DNA. This enzyme forms a complex with BLM which functions in the regulation of recombination in somatic cells. Alternative splicing results in multiple transcript variants encoding different isoforms. [provided by RefSeq, Mar 2016],catalytic activity:ATP-independent breakage of single-stranded DNA, followed by passage and rejoining.,function:Reduces the number of supercoils in a highly negatively supercoiled DNA. Essential component of the RMI complex, a complex that plays an important role in the processing of homologous recombination intermediates to limit DNA crossover formation in cells.,similarity:Belongs to the prokaryotic type I/III topoisomerase family.,subunit:Directly interacts with BLM and RMI1. Component of the RMI complex, containing at least TOP3A, RMI1 and RMI2. The RMI complex interacts with BLM.,tissue specificity:High expression is found in testis, heart, skeletal muscle and pancreas.,

## Research Area

Homologous recombination;

## Image Data



Western blot analysis of 293T using Topo III $\alpha$  antibody. Antibody was diluted at 1:500. Secondary antibody was diluted at 1:20000 cells nucleus extracted by Minute TM Cytoplasmic and Nuclear Fractionation kit (SC-003, Inventbiotech, MN, USA) .

## Note

For research use only.