
Summary

| | |
|------------------------|---------------------------------|
| Production Name | TOB1 Rabbit Polyclonal Antibody |
| Description | Rabbit Polyclonal Antibody |
| Host | Rabbit |
| Application | WB,IHC,ELISA |
| Reactivity | Human,Mouse,Rat |

Performance

| | |
|---------------------|--|
| Conjugation | Unconjugated |
| Modification | Unmodified |
| Isotype | IgG |
| Clonality | Polyclonal |
| Form | Liquid |
| Storage | Store at 4°C short term. Aliquot and store at -20°C long term. Avoid freeze/thaw cycles. |
| Buffer | Liquid in PBS containing 50% glycerol, 0.5% BSA and 0.02% New type preservative N. |
| Purification | Affinity purification |

Immunogen

| | |
|--------------------------|---|
| Gene Name | TOB1 |
| Alternative Names | TOB1; TOB; TROB1; Protein Tob1; Transducer of erbB-2 1 |
| Gene ID | 10140.0 |
| SwissProt ID | P50616.The antiserum was produced against synthesized peptide derived from human TOB1. AA range:130-179 |

Application

| | |
|-------------------------|--|
| Dilution Ratio | WB 1:500 - 1:2000. IHC 1:100 - 1:300. ELISA: 1:10000.. |
| Molecular Weight | 40kD |

Background

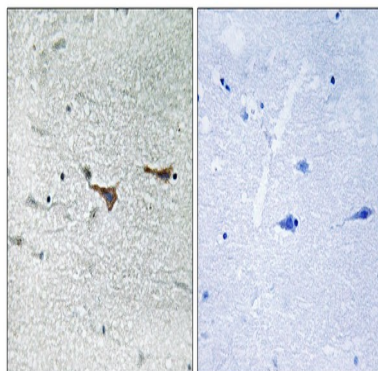
Product Name: TOB1 Rabbit Polyclonal Antibody
Catalog #: APRab19116



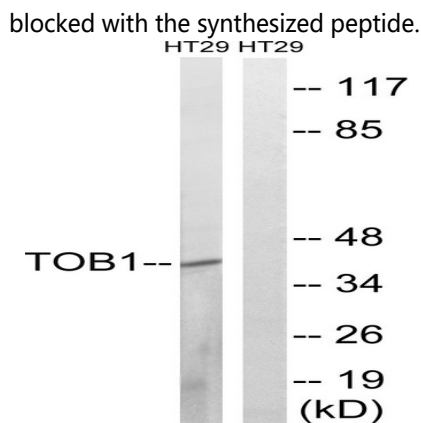
This gene encodes a member of the transducer of erbB-2 /B-cell translocation gene protein family. Members of this family are anti-proliferative factors that have the potential to regulate cell growth. The encoded protein may function as a tumor suppressor. Alternate splicing results in multiple transcript variants. [provided by RefSeq, Aug 2011],function:Anti-proliferative protein that interacts with the erbB-2 receptor tyrosine kinase. May physically and/or functionally interact with protein-tyrosine kinase receptors.,PTM:Phosphorylated on Ser and Thr residues.,similarity:Belongs to the BTG family.,subunit:Interacts with CNOT7.,tissue specificity:Ubiquitous.,

Research Area

Image Data



Immunohistochemistry analysis of paraffin-embedded human brain tissue, using TOB1 Antibody. The picture on the right is blocked with the synthesized peptide.



Western blot analysis of lysates from HT-29 cells, treated with serum 20% 15', using TOB1 Antibody. The lane on the right is blocked with the synthesized peptide.

Note

For research use only.