

Summary

Production Name	TMEPAI Rabbit Polyclonal Antibody
Description	Rabbit Polyclonal Antibody
Host	Rabbit
Application	WB
Reactivity	Human,Rat,Mouse

Performance

Conjugation	Unconjugated
Modification	Unmodified
Isotype	IgG
Clonality	Polyclonal
Form	Liquid
Storage	Store at 4°C short term. Aliquot and store at -20°C long term. Avoid freeze/thaw cycles.
Buffer	Liquid in PBS containing 50% glycerol, 0.5% BSA and 0.02% New type preservative N.
Purification	Affinity purification

Immunogen

Gene Name	PMEPA1 STAG1 TMEPAI
Alternative Names	Transmembrane prostate androgen-induced protein (Solid tumor-associated 1 protein)
Gene ID	56937.0
SwissProt ID	Q969W9.Synthetic peptide from human protein at AA range: 240-287

Application

Dilution Ratio	WB 1:500-2000, ELISA 1:10000-20000
Molecular Weight	36kD

Background

This gene encodes a transmembrane protein that contains a Smad interacting motif (SIM). Expression of this gene is

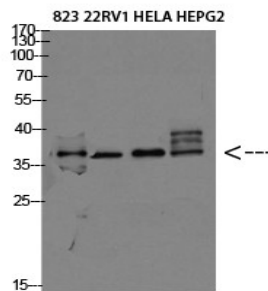
Product Name: TMEPAI Rabbit Polyclonal Antibody
Catalog #: APRab19059



induced by androgens and transforming growth factor beta, and the encoded protein suppresses the androgen receptor and transforming growth factor beta signaling pathways through interactions with Smad proteins. Overexpression of this gene may play a role in multiple types of cancer. Alternatively spliced transcript variants encoding multiple isoforms have been observed for this gene. [provided by RefSeq, Dec 2011],domain:The WW-binding motifs mediate interaction with NEDD4.,induction:By androgen.,similarity:Belongs to the PMEPA1 family.,subunit:Interacts with the WW domains of NEDD4.,tissue specificity:Highest expression in prostate. Also expressed in ovary.,

Research Area

Image Data



Western blot analysis of 823 22RV1 HELA HEPG2 Cell Lysate, antibody was diluted at 1:2000. Secondary antibody was diluted at 1:20000

Note

For research use only.