

Summary

Production Name	TMEM16A Rabbit Polyclonal Antibody
Description	Rabbit Polyclonal Antibody
Host	Rabbit
Application	IF,ELISA
Reactivity	Human,Mouse

Performance

Conjugation	Unconjugated
Modification	Unmodified
Isotype	IgG
Clonality	Polyclonal
Form	Liquid
Storage	Store at 4°C short term. Aliquot and store at -20°C long term. Avoid freeze/thaw cycles.
Buffer	Liquid in PBS containing 50% glycerol, 0.5% BSA and 0.02% New type preservative N.
Purification	Affinity purification

Immunogen

Gene Name	ANO1
Alternative Names	ANO1; DOG1; ORAOV2; TAOS2; TMEM16A; Anoctamin-1; Discovered on gastrointestinal stromal tumors protein 1; Oral cancer overexpressed protein 2; Transmembrane protein 16A; Tumor-amplified and overexpressed sequence 2
Gene ID	55107.0
SwissProt ID	Q5XXA6.The antiserum was produced against synthesized peptide derived from human TM16A. AA range:921-970

Application

Dilution Ratio	IF 1:200-1:1000. ELISA: 1:20000.
Molecular Weight	

Product Name: TMEM16A Rabbit Polyclonal Antibody
Catalog #: APRab19050

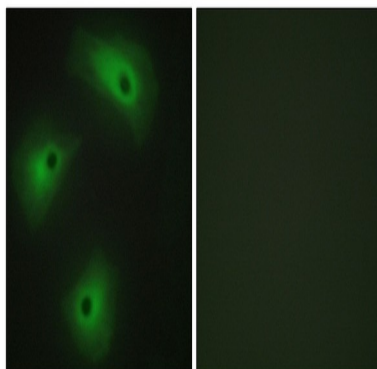


Background

domain:The region spanning the fifth and sixth transmembrane domains probably forms the pore-forming region.,function:Acts as a calcium-activated chloride channel. Required for normal tracheal development.,similarity:Belongs to the anoctamin family.,tissue specificity:Broadly expressed with higher levels in liver and skeletal muscle.,domain:The region spanning the fifth and sixth transmembrane domains probably forms the pore-forming region.,function:Acts as a calcium-activated chloride channel. Required for normal tracheal development.,similarity:Belongs to the anoctamin family.,tissue specificity:Broadly expressed with higher levels in liver and skeletal muscle.,

Research Area

Image Data



Immunofluorescence analysis of HeLa cells, using TM16A Antibody. The picture on the right is blocked with the synthesized peptide.

Note

For research use only.