
Summary

Production Name	TIGD3 Rabbit Polyclonal Antibody
Description	Rabbit Polyclonal Antibody
Host	Rabbit
Application	WB,IHC,ELISA
Reactivity	Human,Rat,Mouse

Performance

Conjugation	Unconjugated
Modification	Unmodified
Isotype	IgG
Clonality	Polyclonal
Form	Liquid
Storage	Store at 4°C short term. Aliquot and store at -20°C long term. Avoid freeze/thaw cycles.
Buffer	Liquid in PBS containing 50% glycerol, 0.5% BSA and 0.02% New type preservative N.
Purification	Affinity purification

Immunogen

Gene Name	TIGD3
Alternative Names	TIGD3; Tigger transposable element-derived protein 3
Gene ID	220359.0
SwissProt ID	Q6B0B8.The antiserum was produced against synthesized peptide derived from human TIGD3. AA range:381-430

Application

Dilution Ratio	WB 1:500 - 1:2000. IHC 1:100 - 1:300. ELISA: 1:40000..
Molecular Weight	55kD

Background

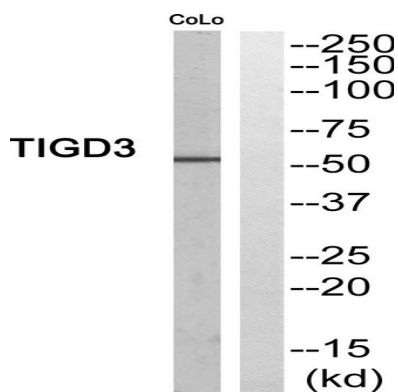
Product Name: TIGD3 Rabbit Polyclonal Antibody
Catalog #: APRab18936



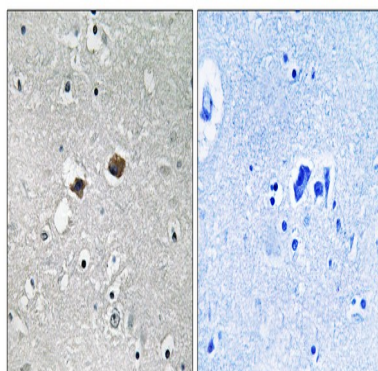
The protein encoded by this gene belongs to the tigger subfamily of the pogo superfamily of DNA-mediated transposons in humans. These proteins are related to DNA transposons found in fungi and nematodes, and more distantly to the Tc1 and mariner transposases. They are also very similar to the major mammalian centromere protein B. The exact function of this gene is not known. [provided by RefSeq, Jul 2008],similarity:Belongs to the tigger transposable element derived protein family.,similarity:Contains 1 DDE domain.,similarity:Contains 1 HTH CENPB-type DNA-binding domain.,similarity:Contains 1 HTH psq-type DNA-binding domain.,

Research Area

Image Data

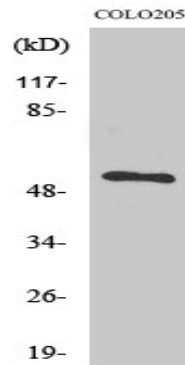


Western blot analysis of TIGD3 Antibody. The lane on the right is blocked with the TIGD3 peptide.



Immunohistochemistry analysis of paraffin-embedded human brain, using TIGD3 Antibody. The lane on the right is blocked with the TIGD3 peptide.

Product Name: TIGD3 Rabbit Polyclonal Antibody
Catalog #: APRab18936



Western Blot analysis of various cells using TIGD3 Polyclonal Antibody. Secondary antibody was diluted at 1:20000 cells nucleus extracted by Minute TM Cytoplasmic and Nuclear Fractionation kit (SC-003, Inventbiotech, MN, USA) .

Note

For research use only.