

Summary

Production Name	TGF α Rabbit Polyclonal Antibody
Description	Rabbit Polyclonal Antibody
Host	Rabbit
Application	IHC, WB, ELISA
Reactivity	Human, Mouse, Rat, Monkey

Performance

Conjugation	Unconjugated
Modification	Unmodified
Isotype	IgG
Clonality	Polyclonal
Form	Liquid
Storage	Store at 4°C short term. Aliquot and store at -20°C long term. Avoid freeze/thaw cycles.
Buffer	Liquid in PBS containing 50% glycerol, 0.5% BSA and 0.02% New type preservative N.
Purification	Affinity purification

Immunogen

Gene Name	TGFA
Alternative Names	TGFA; Protransforming growth factor alpha
Gene ID	7039.0
SwissProt ID	P01135. The antiserum was produced against synthesized peptide derived from human TGF alpha. AA range: 111-160

Application

Dilution Ratio	WB 1:500 - 1:2000. IHC 1:100 - 1:300. ELISA: 1:10000..
Molecular Weight	10kD

Background

Product Name: TGF α Rabbit Polyclonal Antibody
Catalog #: APRab18854

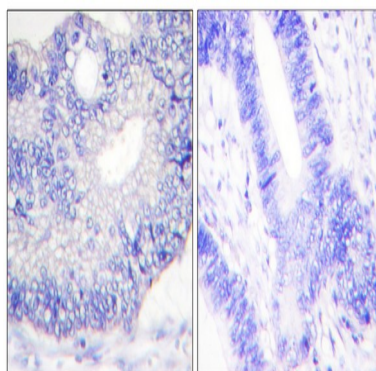


This gene encodes a growth factor that is a ligand for the epidermal growth factor receptor, which activates a signaling pathway for cell proliferation, differentiation and development. This protein may act as either a transmembrane-bound ligand or a soluble ligand. This gene has been associated with many types of cancers, and it may also be involved in some cases of cleft lip/palate. Alternatively spliced transcript variants encoding different isoforms have been found for this gene. [provided by RefSeq, Sep 2011],function:TGF alpha is a mitogenic polypeptide that is able to bind to the EGF receptor and to act synergistically with TGF beta to promote anchorage-independent cell proliferation in soft agar.,similarity:Contains 1 EGF-like domain.,subunit:Interacts with the PDZ domains of MAGI3, SDCBP and SNTA1. The interaction with SDCBP, is required for the targeting to the cell surface. In the endoplasmic reticulum, in its immature form (i.e. with a prosegment and lacking full N-glycosylation), interacts with CNIH. In the Golgi apparatus, may form a complex with CNIH and GORASP2.,

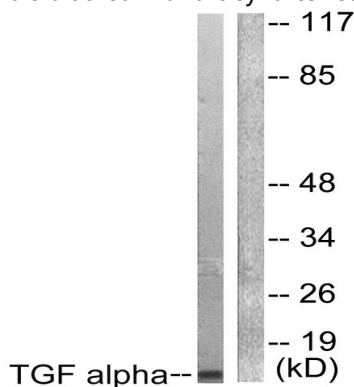
Research Area

ErbB_HER;Pathways in cancer;Renal cell carcinoma;Pancreatic cancer;Glioma;Prostate cancer;Non-small cell lung cancer;

Image Data

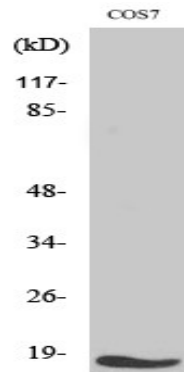


Immunohistochemistry analysis of paraffin-embedded human colon carcinoma tissue, using TGF alpha Antibody. The picture on the right is blocked with the synthesized peptide.



Western blot analysis of lysates from COS7 cells, using TGF alpha Antibody. The lane on the right is blocked with the synthesized peptide.

Product Name: TGF α Rabbit Polyclonal Antibody
Catalog #: APRab18854



Western Blot analysis of various cells using TGF α Polyclonal Antibody

Note

For research use only.